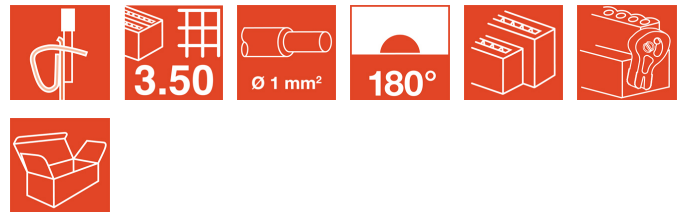


B2L/S2L 3.50 - 2-row series B2L 3.50/10/180LH SN BK BX

Weidmüller Interface GmbH & Co. KG
 Klingenbergstraße 16
 D-32758 Detmold
 Germany
 Fon: +49 5231 14-0
 Fax: +49 5231 14-2083
 www.weidmueller.com



Female connectors with tension clamp connection system enable quick and simple wiring. These female header can be mounted side by side and therefore have a high connection density. The release lever simplifies the separation of the connection in confined spaces. The socket blocks provide space for labelling and can be coded.

- 0.20 - 1.0mm² (IEC) / 28 - 18 AWG (UL)
- 80 V (IEC) / 150 V (UL)
- 10 A (IEC) / 10 A (UL)

General ordering data

Order No.	1748510000
Type	B2L 3.50/10/180LH SN BK BX
Version	PCB plug-in connector, female plug, 3.50 mm, No. of poles: 10, 180°, Tension clamp connection, Clamping range, rated connection, max.: 1 mm ² , Box
Product data	IEC: 250 V / 10.3 A / 0.2 - 1 mm ² UL: 300 V / 10 A / AWG 28 - AWG 16
EAN	4032248038220
Qty.	50 pc(s).
Packaging	Box

Creation date November 7, 2011 2:04:03 PM CET

Last update 28.10.2011 / We reserve the right to make technical changes.

B2L/S2L 3.50 - 2-row series
B2L 3.50/10/180LH SN BK BX

Weidmüller Interface GmbH & Co. KG
 Klingenbergstraße 16
 D-32758 Detmold
 Germany
 Fon: +49 5231 14-0
 Fax: +49 5231 14-2083
 www.weidmueller.com

Technical data

System parameters

Product family	B2L/S2L 3.50 - 2-row series	Conductor connection system	Tension clamp connection
Outgoing direction of conductor	180°	Pitch, in mm	3.5 mm
Pitch, in inches	0.138 inch	No. of poles	10
Number of rows	1	Stripping length	7 mm
L1 in mm	14 mm	L1 in inches	0.551 inch
Touch-safe protection acc. to DIN VDE 0470	IP 20	Touch-safe protection acc. to DIN VDE 57106	Safe from finger touch

Material data

Insulating material	PBT	Colour	black
Colour chart	Similar to RAL 9011	Flammability class UL 94	V-0
CTI	≥ 200	Contact material	Copper alloy
Contact surface	tinned	Continuous operating temp., min.	-25 °C
Continuous operating temp., max.	100 °C		

Connectable conductors

Clamping range, rated connection, min.	0.08 mm ²	Clamping range, rated connection, max.	1 mm ²
Wire connection cross section AWG, min.	AWG 28	Wire connection cross section AWG, max.	AWG 18
Solid, min. H05(07) V-U	0.2 mm ²	Solid, max. H05(07) V-U	1 mm ²
Flexible, min. H05(07) V-K	0.2 mm ²	Flexible, max. H05(07) V-K	1 mm ²
w. wire end ferrule, DIN 46228 pt 1, min.	0.13 mm ²	w. wire end ferrule, DIN 46228 pt 1, max.	0.34 mm ²
w. plastic collar ferrule, DIN 46228 pt 4, min.	0.13 mm ²	w. plastic collar ferrule, DIN 46228 pt 4, max.	0.34 mm ²

DIN IEC rating data

Rated current, min. no. of poles (Tu=20°C)	10.3 A	Rated current, max. no. of poles (Tu=20°C)	8.7 A
Rated current, number of poles (Tu=40°C), min	8.9 A	Rated current, number of poles (Tu=40°C), max.	7.4 A
Rated voltage for surge voltage class / pollution degree II/2	250 V	Rated voltage for surge voltage class / pollution degree III/2	160 V
Rated voltage for surge voltage class / pollution degree III/3	80 V	Rated impulse voltage for surge voltage class/ pollution degree II/2	2.5 kV
Rated impulse voltage for surge voltage class/ pollution degree III/2	2.5 kV	Rated impulse voltage for surge voltage class/ contamination degree III/3	2.5 kV
Short-time withstand current resistance	3 x 1s with 77 A		

CSA rating data

Rated voltage (Use group B)	300 V	Rated current (use group B)	5 A
Wire cross-section, AWG, min.	AWG 28	Wire cross-section, AWG, max.	AWG 18

UL 1059 rating data

Rated voltage (use group B)	300 V	Rated current (use group B)	10 A
Rated voltage (use group D)	300 V	Rated current (use group D)	10 A
Wire cross-section, AWG, min.	AWG 28	Wire cross-section, AWG, max.	AWG 16

Classifications

ETIM 4.0	EC002637	UNSPSC	30-21-18-10
eClass 4.1	27-26-07-01	eClass 5.1	27-26-07-01
eClass 6.0	27-26-07-04		

**B2L/S2L 3.50 - 2-row series
B2L 3.50/10/180LH SN BK BX**

Weidmüller Interface GmbH & Co. KG
Klingenbergstraße 16
D-32758 Detmold
Germany
Fon: +49 5231 14-0
Fax: +49 5231 14-2083
www.weidmueller.com

Technical data**Approvals**

Approvals CSA; UR; ROHS

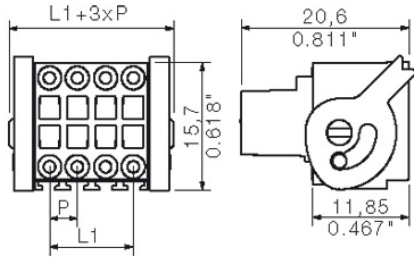
Notes

- Notes
- Additional colours on request
 - Gold-plated contact surfaces on request
 - Rated current related to rated cross-section and min. No. of poles.
 - Wire end ferrule with plastic collar to DIN 46228/4
 - Wire end ferrule without plastic collar to DIN 46228/1
 - P on drg. = pitch
 - We recommend crimp shape A for wire-end ferrules with crimping tools PZ 1,5 (order no. 9005990000) or PZ 6/5 (order no. 9011460000) for the larger wire cross-sections.
 - Rated data refer only to the component itself. Clearance and creepage distances to other components are to be designed in accordance with the relevant application standards.

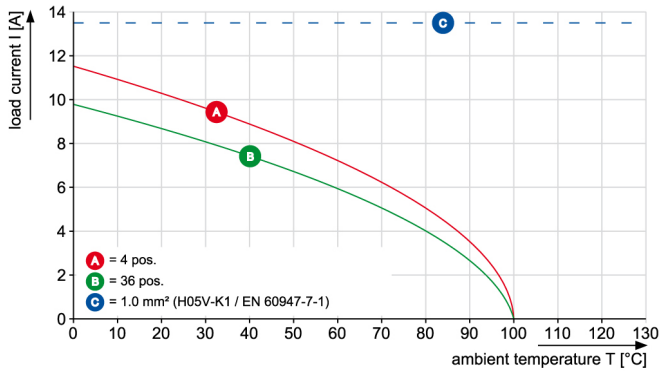
B2L/S2L 3.50 - 2-row series
B2L 3.50/10/180LH SN BK BX

Weidmüller Interface GmbH & Co. KG
 Klingenbergstraße 16
 D-32758 Detmold
 Germany
 Fon: +49 5231 14-0
 Fax: +49 5231 14-2083
 www.weidmueller.com

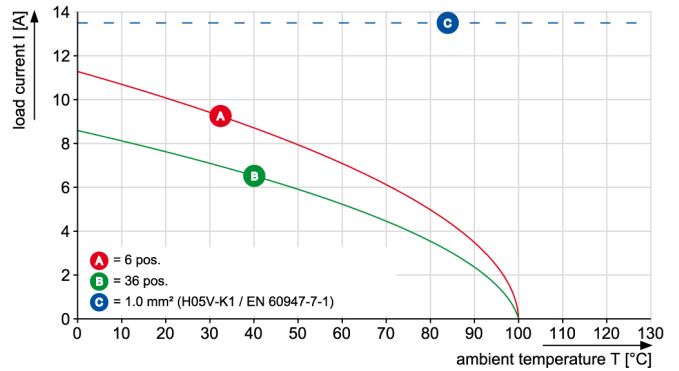
Drawings



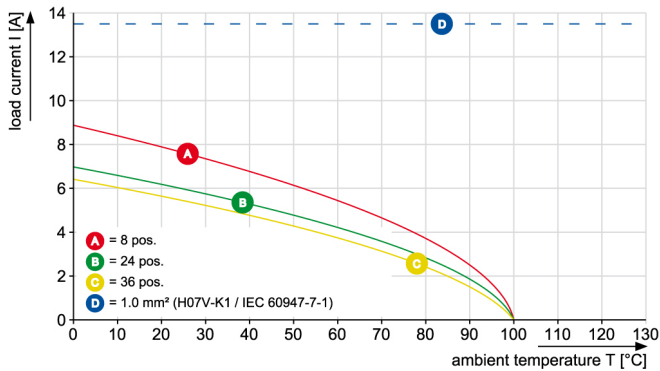
B2L 3.50/./180 - S2L-SMT 3.50/./90



B2L 3.50/./180 - S2L 3.50/./90



B2L 3.50/./180 - S2LD-THR 3.50/./90



B2L/S2L 3.50 - 2-row series
B2L 3.50/10/180LH SN BK BX

Weidmüller Interface GmbH & Co. KG
 Klingenbergstraße 16
 D-32758 Detmold
 Germany
 Fon: +49 5231 14-0
 Fax: +49 5231 14-2083
 www.weidmueller.com

Mating connector (conditionally pluggable)

S2L 3.5/180G



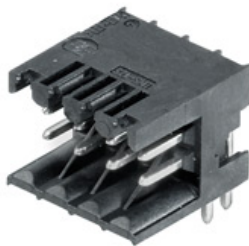
Straight two-tier pin header available as closed-sided or with flange (open-sided pin headers on request). Pin headers with 3.5mm pins are designed for wave soldering and are packaged in a box. They can be screwed on to the PCB. The pin headers provide space for labelling and can be coded.

- 80 V (IEC) / 150 V (UL)
- 9 A (IEC) / 8 A (UL)

General ordering data

Order No.	Type	Version	Product data	EAN	Qty.	Packaging
1728810000	S2L 3.50/10/180G 3.5SN OR BX	PCB plug-in connector, male header, closed side, Solder connection, 3.50 mm, No. of poles: 10, 180°, Solder pin length: 3.5 mm, tinned, orange, Box	IEC: 250 V / 10 A UL: 150 V / 10 A	4032248040261	50 pc(s).	Box
1728970000	S2L 3.50/10/180G 3.5SN BK BX	PCB plug-in connector, male header, closed side, Solder connection, 3.50 mm, No. of poles: 10, 180°, Solder pin length: 3.5 mm, tinned, black, Box	IEC: 250 V / 10 A UL: 150 V / 10 A	4032248040407	50 pc(s).	Box

S2L-SMT 3.5/90 Tape



High-temperature-resistant, straight, 2-tier male connector for all common soldering methods. Optimised for automatic assembly. Packed in box or tape. 3.2 mm solder pin suitable for reflow and wave soldering. These male connectors can be labelled and coded.

- 50 V (IEC) / 150 V (UL)
- 10 A (IEC) / 10 A (UL)

General ordering data

Order No.	Type	Version	Product data	EAN	Qty.	Packaging
1807390000	S2L-SMT 3.50/10/90 3.2SN BK RL	PCB plug-in connector, male header, open side, Reflow solder connection, 3.50 mm, No. of poles: 10, 90°, Solder pin length: 3.2 mm, tinned, black, Tape	IEC: 160 V / 10 A UL: 150 V / 10 A	4032248278688	235 pc(s).	Tape

B2L/S2L 3.50 - 2-row series B2L 3.50/10/180LH SN BK BX

Weidmüller Interface GmbH & Co. KG
 Klingenbergstraße 16
 D-32758 Detmold
 Germany
 Fon: +49 5231 14-0
 Fax: +49 5231 14-2083
 www.weidmueller.com

Mating connector (conditionally pluggable)

S2L-SMT 3.5/90G Tape



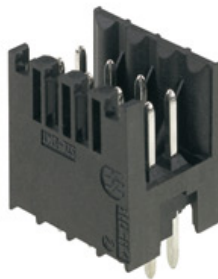
High-temperature-resistant, straight, 2-tier male connector for all common soldering methods. Optimised for automatic assembly. Packed in box or tape. 3.2 mm solder pin suitable for reflow and wave soldering. These male connectors can be labelled and coded.

- 50 V (IEC) / 150 V (UL)
- 10 A (IEC) / 10 A (UL)

General ordering data

Order No.	Type	Version	Product data	EAN	Qty.	Packaging
1807490000	S2L-SMT 3.50/10/90G 3.2SN BK RL	PCB plug-in connector, male header, closed side, Reflow solder connection, 3.50 mm, No. of poles: 10, 90°, Solder pin length: 3.2 mm, tinned, black, Tape	IEC: 160 V / 10 A UL: 150 V / 10 A	4032248278787	235 pc(s).	Tape

S2L-SMT 3.5/180 Box



High-temperature-resistant, straight, 2-tier male connector for all common soldering methods. Optimized for automatic assembly. Packed in box or tape. 3.2 mm solder pin suitable for reflow and wave soldering. The pin headers can be labelled and coded. (Packaging in tape on request)

- 50 V (IEC) / 150 V (UL)
- 10 A (IEC) / 10 A (UL)

General ordering data

Order No.	Type	Version	Product data	EAN	Qty.	Packaging
1794710000	S2L-SMT 3.50/10/180 3.5SN BK BX	PCB plug-in connector, male header, open side, Reflow solder connection, 3.50 mm, No. of poles: 10, 180°, Solder pin length: 3.5 mm, tinned, Box	IEC: 160 V / 10 A UL: 150 V / 10 A	4032248231898	50 pc(s).	Box

B2L/S2L 3.50 - 2-row series B2L 3.50/10/180LH SN BK BX

Weidmüller Interface GmbH & Co. KG
 Klingenbergstraße 16
 D-32758 Detmold
 Germany
 Fon: +49 5231 14-0
 Fax: +49 5231 14-2083
 www.weidmueller.com

Mating connector (conditionally pluggable)

S2L-SMT 3.5/90 BOX



High-temperature-resistant, straight, 2-tier pin header for all common soldering methods. Optimized for automatic assembly. Packed in box or tape. 3.2 mm solder pin suitable for reflow and wave soldering. These pin headers can be labelled and coded. (Packaging in tape on request)

- 50 V (IEC) / 150 V (UL)
- 10 A (IEC) / 10 A (UL)

General ordering data

Order No.	Type	Version	Product data	EAN	Qty.	Packaging
1794390000	S2L-SMT 3.50/10/90 3.2SN BK BX	PCB plug-in connector, male header, open side, Reflow solder connection, 3.50 mm, No. of poles: 10, 90°, Solder pin length: 3.2 mm, tinned, black, Box	IEC: 160 V / 10 A UL: 150 V / 10 A	4032248231577	50 pc(s).	Box

S2L-SMT 3.5/180G Tape



High-temperature-resistant, straight, 2-tier male connector for all common soldering methods. Optimised for automatic assembly. Packed in box or tape. 3.2 mm solder pin suitable for reflow and wave soldering. These male connectors can be labelled and coded.

- 50 V (IEC) / 150 V (UL)
- 10 A (IEC) / 10 A (UL)

General ordering data

Order No.	Type	Version	Product data	EAN	Qty.	Packaging
1807800000	S2L-SMT 3.50/10/180G 3.5SN BK RL	PCB plug-in connector, male header, closed side, Reflow solder connection, 3.50 mm, No. of poles: 10, 180°, Solder pin length: 3.5 mm, tinned, black, Tape	IEC: 160 V / 10 A UL: 150 V / 10 A	4032248279500	175 pc(s).	Tape

B2L/S2L 3.50 - 2-row series
B2L 3.50/10/180LH SN BK BX

Weidmüller Interface GmbH & Co. KG
 Klingenbergstraße 16
 D-32758 Detmold
 Germany
 Fon: +49 5231 14-0
 Fax: +49 5231 14-2083
 www.weidmueller.com

Mating connector (conditionally pluggable)

S2L-SMT 3.5/90G Box



High-temperature-resistant, straight, 2-tier male connector for all common soldering methods. Optimised for automatic assembly. Packed in box or tape. 3.2 mm solder pin suitable for reflow and wave soldering. These male connectors can be labelled and coded.

- 50 V (IEC) / 150 V (UL)
- 10 A (IEC) / 10 A (UL)

General ordering data

Order No.	Type	Version	Product data	EAN	Qty.	Packaging
1794230000	S2L-SMT 3.50/10/90G 3.2SN BK BX	PCB plug-in connector, male header, closed side, Reflow solder connection, 3.50 mm, No. of poles: 10, 90°, Solder pin length: 3.2 mm, tinned, black, Box	IEC: 160 V / 10 A UL: 150 V / 10 A	4032248231270	50 pc(s).	Box

S2L-SMT 3.5/180G Box



High-temperature-resistant, straight, 2-tier male connector for all common soldering methods. Optimised for automatic assembly. Packed in box or tape. 3.2 mm solder pin suitable for reflow and wave soldering. These male connectors can be labelled and coded.

- 50 V (IEC) / 150 V (UL)
- 10 A (IEC) / 10 A (UL)

General ordering data

Order No.	Type	Version	Product data	EAN	Qty.	Packaging
1794550000	S2L-SMT 3.50/10/180G 3.5SN BK BX	PCB plug-in connector, male header, closed side, Reflow solder connection, 3.50 mm, No. of poles: 10, 180°, Solder pin length: 3.5 mm, tinned, black, Box	IEC: 160 V / 10 A UL: 150 V / 10 A	4032248231737	50 pc(s).	Box

B2L/S2L 3.50 - 2-row series
B2L 3.50/10/180LH SN BK BX

Weidmüller Interface GmbH & Co. KG
 Klingenbergstraße 16
 D-32758 Detmold
 Germany
 Fon: +49 5231 14-0
 Fax: +49 5231 14-2083
 www.weidmueller.com

Mating connector (conditionally pluggable)

S2L 3.5/180F



Straight two-tier pin header available as closed-sided or with flange (open-sided pin headers on request). Pin headers with 3.5mm pins are designed for wave soldering and are packaged in a box. They can be screwed on to the PCB. The pin headers provide space for labelling and can be coded.

- 80 V (IEC) / 150 V (UL)
- 9 A (IEC / 8 A (UL)

General ordering data

Order No.	Type	Version	Product data	EAN	Qty.	Packaging
1729450000	S2L 3.50/10/180F 3.5SN OR BX	PCB plug-in connector, male header, Flange, Solder connection, 3.50 mm, No. of poles: 10, 180°, Solder pin length: 3.5 mm, tinned, orange, Box	IEC: 250 V / 10 A UL: 150 V / 10 A	4032248040872	50 pc(s).	Box

S2L 3.5/90F



Angled, two-tier pin header available as closed-sided or with flange (open-sided pin headers on request). Pin headers with 3.5mm pins are designed for wave soldering and are packaged in a box. They can be screwed on to the PCB. The pin headers provide space for labelling and can be coded.

- 80 V (IEC) / 150 V (UL)
- 9 A (IEC / 8 A (UL)

General ordering data

Order No.	Type	Version	Product data	EAN	Qty.	Packaging
1728650000	S2L 3.50/10/90F 3.5SN BK BX	PCB plug-in connector, male header, Flange, Solder connection, 3.50 mm, No. of poles: 10, 90°, Solder pin length: 3.5 mm, tinned, black, Box	IEC: 250 V / 10 A UL: 150 V / 10 A	4032248040117	50 pc(s).	Box
1728490000	S2L 3.50/10/90F 3.5SN OR BX	PCB plug-in connector, male header, Flange, Solder connection, 3.50 mm, No. of poles: 10, 90°, Solder pin length: 3.5 mm, tinned, orange, Box	IEC: 250 V / 10 A UL: 150 V / 10 A	4032248039975	50 pc(s).	Box

B2L/S2L 3.50 - 2-row series B2L 3.50/10/180LH SN BK BX

Weidmüller Interface GmbH & Co. KG
 Klingenbergstraße 16
 D-32758 Detmold
 Germany
 Fon: +49 5231 14-0
 Fax: +49 5231 14-2083
 www.weidmueller.com

Mating connector (conditionally pluggable)

S2L 3.5/90G



Angled, two-tier pin header available as closed-sided or with flange (open-sided pin headers on request). Pin headers with 3.5mm pins are designed for wave soldering and are packaged in a box. They can be screwed on to the PCB. The pin headers provide space for labelling and can be coded.

- 80 V (IEC) / 150 V (UL)
- 9 A (IEC) / 8 A (UL)

General ordering data

Order No.	Type	Version	Product data	EAN	Qty.	Packaging
1727850000	S2L 3.50/10/90G 3.5SN OR BX	PCB plug-in connector, male header, closed side, Solder connection, 3.50 mm, No. of poles: 10, 90°, Solder pin length: 3.5 mm, tinned, orange, Box	IEC: 250 V / 10 A UL: 150 V / 10 A	4032248039364	50 pc(s).	Box
1728010000	S2L 3.50/10/90G 3.5SN BK BX	PCB plug-in connector, male header, closed side, Solder connection, 3.50 mm, No. of poles: 10, 90°, Solder pin length: 3.5 mm, tinned, black, Box	IEC: 250 V / 10 A UL: 150 V / 10 A	4032248039500	50 pc(s).	Box

B2L/S2L 3.50 - 2-row series B2L 3.50/10/180LH SN BK BX

Weidmüller Interface GmbH & Co. KG
 Klingenbergstraße 16
 D-32758 Detmold
 Germany
 Fon: +49 5231 14-0
 Fax: +49 5231 14-2083
 www.weidmueller.com

Mating connector (fully pluggable)

S2L-SMT 3.5/90LF Tape



High-temperature-resistant, straight, 2-tier male connector for all common soldering methods. Optimised for automatic assembly. Packed in box or tape. 3.2 mm solder pin suitable for reflow and wave soldering. These male connectors can be labelled and coded.

- 50 V (IEC) / 150 V (UL)
- 10 A (IEC) / 10 A (UL)

General ordering data

Order No.	Type	Version	Product data	EAN	Qty.	Packaging
1807580000	S2L-SMT 3.50/10/90LF 3.2SN BK RL	PCB plug-in connector, male header, Solder flange, Reflow solder connection, 3.50 mm, No. of poles: 10, 90°, Solder pin length: 3.2 mm, tinned, Tape	IEC: 160 V / 10 A UL: 150 V / 10 A	4032248278879	235 pc(s).	Tape

S2L-SMT 3.5/180LF Tape



High-temperature-resistant, straight, 2-tier male connector for all common soldering methods. Optimised for automatic assembly. Packed in box or tape. 3.2 mm solder pin suitable for reflow and wave soldering. These male connectors can be labelled and coded.

- 50 V (IEC) / 150 V (UL)
- 10 A (IEC) / 10 A (UL)

General ordering data

Order No.	Type	Version	Product data	EAN	Qty.	Packaging
1807890000	S2L-SMT 3.50/10/180LF 3.5SN BK RL	PCB plug-in connector, male header, Solder flange, Reflow solder connection, 3.50 mm, No. of poles: 10, 180°, Solder pin length: 3.5 mm, tinned, black, Tape	IEC: 160 V / 10 A UL: 150 V / 10 A	4032248279593	175 pc(s).	Tape

B2L/S2L 3.50 - 2-row series B2L 3.50/10/180LH SN BK BX

Weidmüller Interface GmbH & Co. KG
 Klingenbergstraße 16
 D-32758 Detmold
 Germany
 Fon: +49 5231 14-0
 Fax: +49 5231 14-2083
 www.weidmueller.com

Mating connector (fully pluggable)

S2L-SMT 3.5/180LF Box



High-temperature-resistant, straight, 2-tier male connector for all common soldering methods. Optimised for automatic assembly. Packed in box or tape. 3.2 mm solder pin suitable for reflow and wave soldering. These male connectors can be labelled and coded.

- 50 V (IEC) / 150 V (UL)
- 10 A (IEC) / 10 A (UL)

General ordering data

Order No.	Type	Version	Product data	EAN	Qty.	Packaging
1795220000	S2L-SMT 3.50/10/180LF 3.5SN BK BX	PCB plug-in connector, male header, Solder flange, Reflow solder connection, 3.50 mm, No. of poles: 10, 180°, Solder pin length: 3.5 mm, tinned, black, Box	IEC: 160 V / 10 A UL: 150 V / 10 A	4032248232734	50 pc(s).	Box

S2L-SMT 3.5/90LF Box



High-temperature-resistant, straight, 2-tier male connector for all common soldering methods. Optimised for automatic assembly. Packed in box or tape. 3.2 mm solder pin suitable for reflow and wave soldering. These male connectors can be labelled and coded.

- 50 V (IEC) / 150 V (UL)
- 10 A (IEC) / 10 A (UL)

General ordering data

Order No.	Type	Version	Product data	EAN	Qty.	Packaging
1794880000	S2L-SMT 3.50/10/90LF 3.2SN BK BX	PCB plug-in connector, male header, Solder flange, Reflow solder connection, 3.50 mm, No. of poles: 10, 90°, Solder pin length: 3.2 mm, tinned, Box	IEC: 160 V / 10 A UL: 150 V / 10 A	4032248232338	50 pc(s).	Box

