

REVISION J

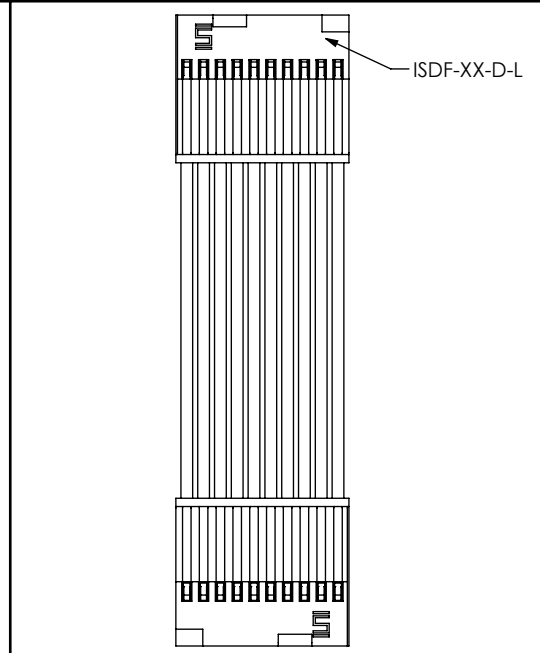
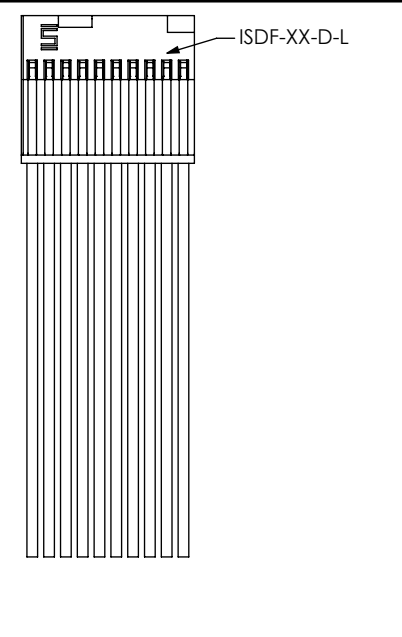
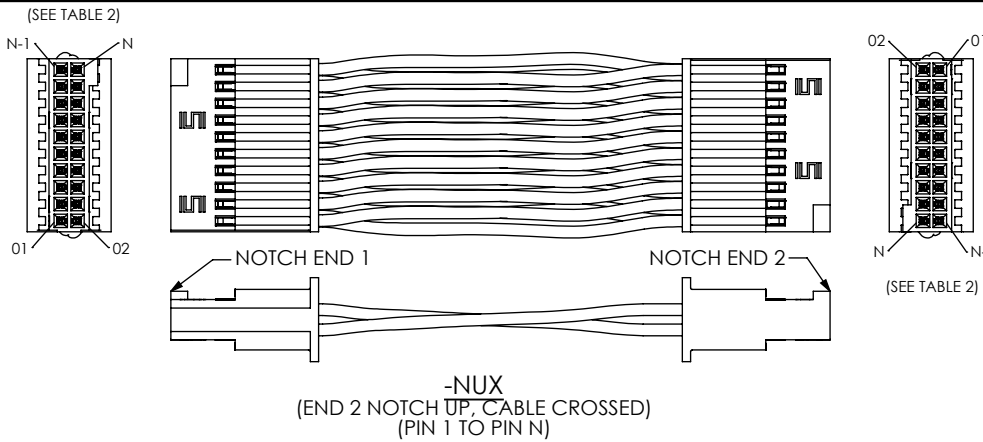
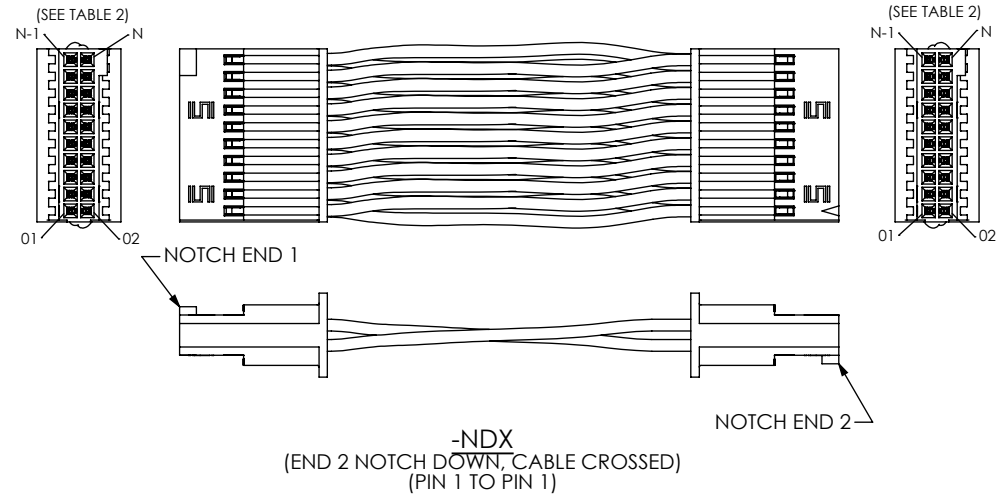
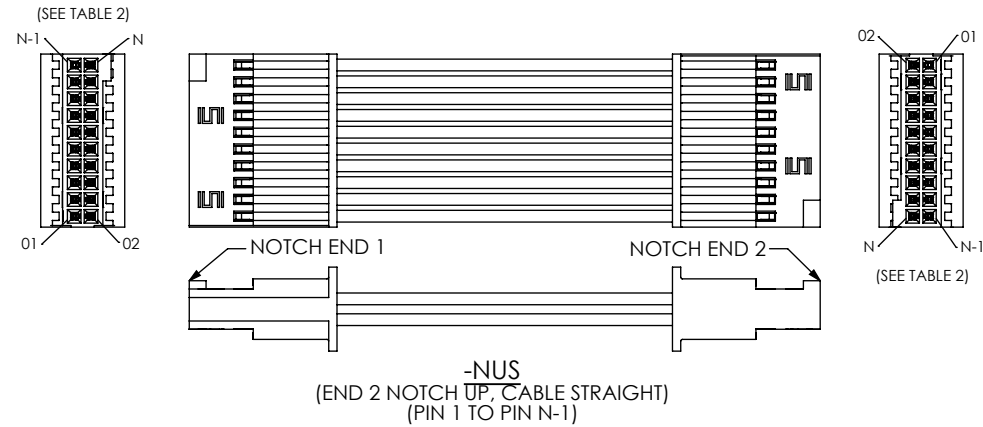
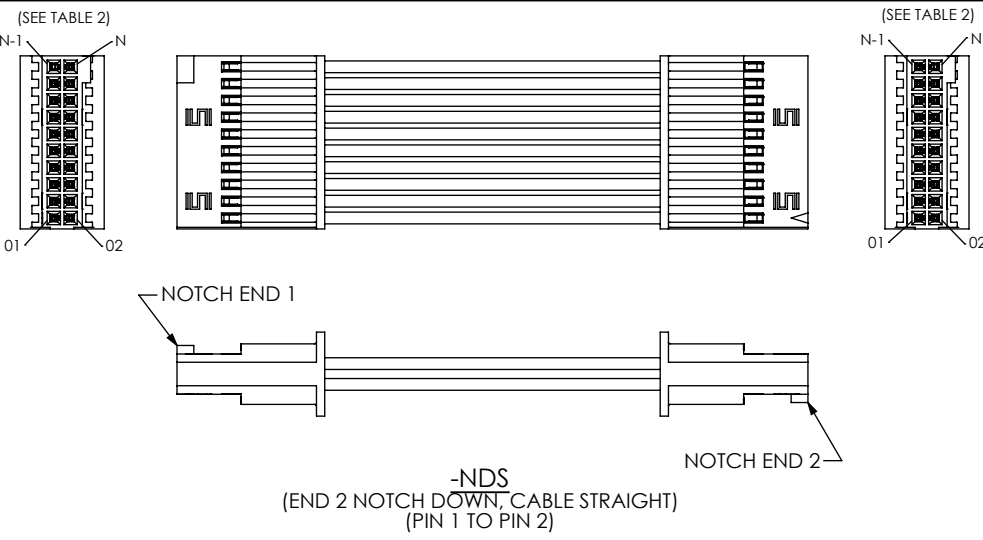


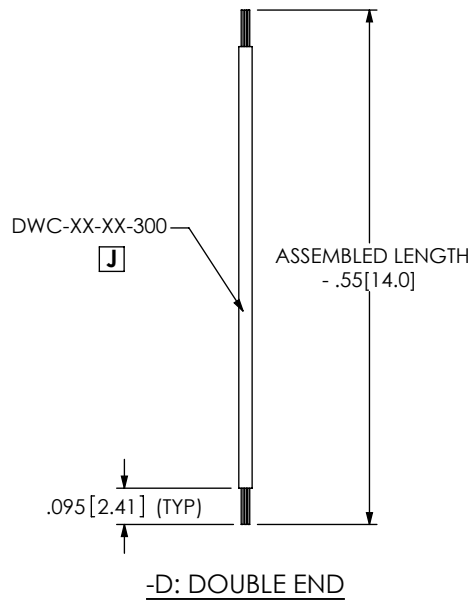
FIG. 3
-SL: SINGLE END RETENTION LOCK
(SFSD-10-28-X-XX.XX-SL SHOWN)
(SAME AS FIG. 1, UNLESS OTHERWISE STATED)

FIG. 4
-DL: DOUBLE END RETENTION LOCK
(SFSD-10-28-X-XX.XX-DL-NUS SHOWN)
(SAME AS FIG. 1, UNLESS OTHERWISE STATED)

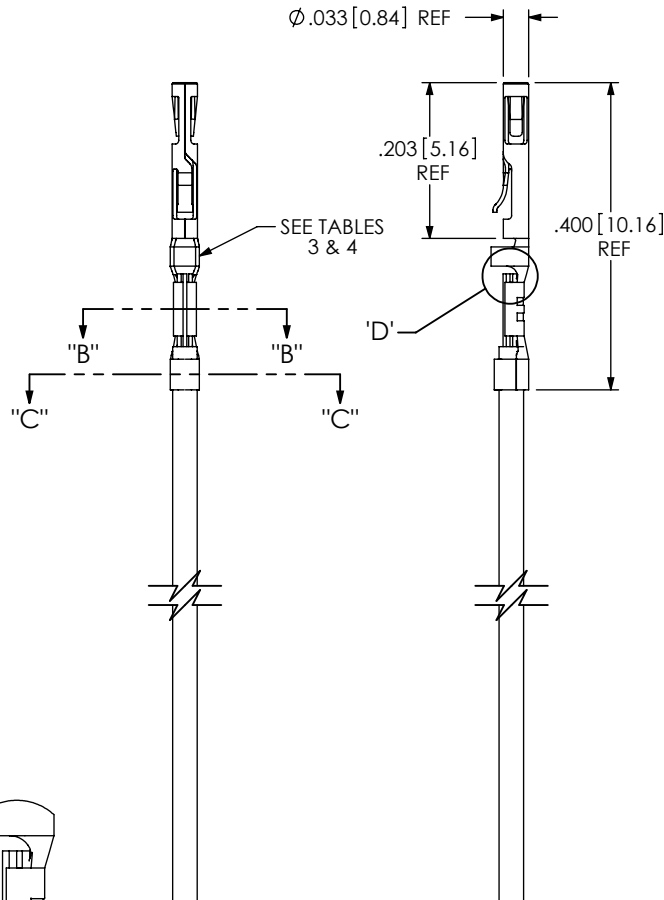


<p>PROPRIETARY NOTE THIS DOCUMENT CONTAINS INFORMATION CONFIDENTIAL AND PROPRIETARY TO SAMTEC, INC. AND SHALL NOT BE REPRODUCED OR TRANSFERRED TO OTHER DOCUMENTS OR DISCLOSED TO OTHERS OR USED FOR ANY PURPOSE OTHER THAN THAT WHICH IT WAS OBTAINED WITHOUT THE EXPRESSED WRITTEN CONSENT OF SAMTEC, INC.</p> <p>DO NOT SCALE DRAWING</p> <p>SHEET SCALE: 1:0.571429</p>	<p>520 PARK EAST BLVD, NEW ALBANY, IN 47150 PHONE: 812-944-6733 FAX: 812-948-5047 e-Mail: info@SAMTEC.com code: 55322</p>	
	<p>DESCRIPTION: .050[1.27] SOCKET DISCRETE CABLE ASSEMBLY</p> <p>DWG. NO. SFSD-XX-XXX-X-XX.XX-XX-XXX</p> <p>BY: BRATCHER 5/5/2005 SHEET 2 OF 4</p>	

IN-PROCESS 1



IN-PROCESS 2
(TYP BOTH END FOR -D: DOUBLE END)



-S IN-PROCESS
(SFSD-10-28-X-XX.XX-D-NUS SHOWN)
(SAME AS FIG. 1, UNLESS OTHERWISE STATED)

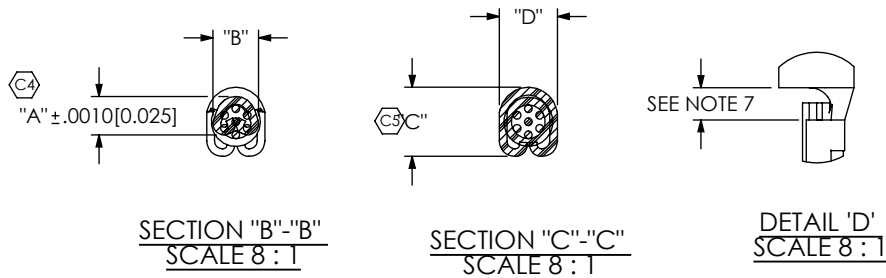
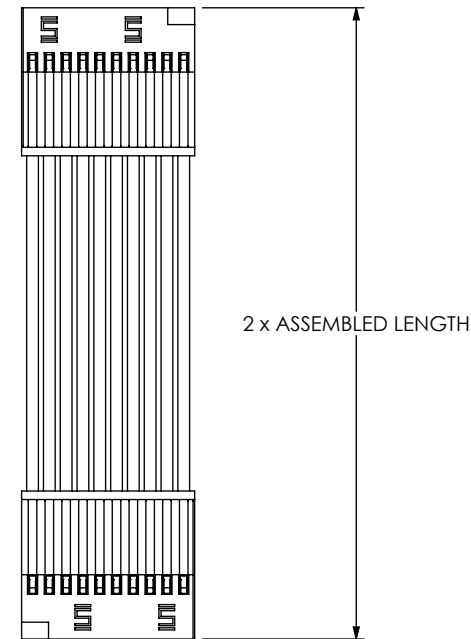


TABLE 3: GAUGE

AWG	CONTACT	CABLE	"A"	"B"	"C"	"D"
-28	C-203-2830-X or CC03X-2830-01-X	DWC-28-XX-300	.0200 [0.508]	.0300 [0.762]	.0450 [1.143]	.0380 [0.965]
-30	C-203-2830-X or CC03X-2830-01-X	DWC-30-XX-300	.0180 [0.457]	.0300 [0.762]	.0450 [1.143]	.0380 [0.965]

TABLE 4: PLATING

PLATING	CONTACT
-H	C-203-2830-H or CC03X-2830-01-H
-GF	C-203-2830-GF or CC03X-2830-01-GF
-G	C-203-2830-G or CC03X-2830-01-G
* -S	C-203-2830-H or CC03X-2830-01-S
* -F	C-203-2830-GF or CC03X-2830-01-F
* -L	C-203-2830-G or CC03X-2830-01-L

PROPRIETARY NOTE
THIS DOCUMENT CONTAINS INFORMATION CONFIDENTIAL AND PROPRIETARY TO SAMTEC, INC. AND SHALL NOT BE REPRODUCED OR TRANSFERRED TO OTHER DOCUMENTS OR DISCLOSED TO OTHERS OR USED FOR ANY PURPOSE OTHER THAN THAT WHICH IT WAS OBTAINED WITHOUT THE EXPRESSED WRITTEN CONSENT OF SAMTEC, INC.

DO NOT SCALE DRAWING

SHEET SCALE: 2:1



520 PARK EAST BLVD, NEW ALBANY, IN 47150
PHONE: 812-944-6733 FAX: 812-948-5047
e-Mail: info@SAMTEC.com code: 55322

DESCRIPTION:
.050 [1.27] SOCKET DISCRETE CABLE ASSEMBLY

DWG. NO. **J** SFSD-XX-XXX-X-XX.XX-XX-XXX

BY: BRATCHER 5/5/2005 SHEET 3 OF 4

FIG. 5
 -SR: SINGLE END WITH RETENTION LATCH
 (SFSD-10-28-X-XX.XX-SR SHOWN)
 (ONLY AVAILABLE ON -05 THRU -30 POS)
 (SAME AS FIG. 1, UNLESS OTHERWISE STATED)

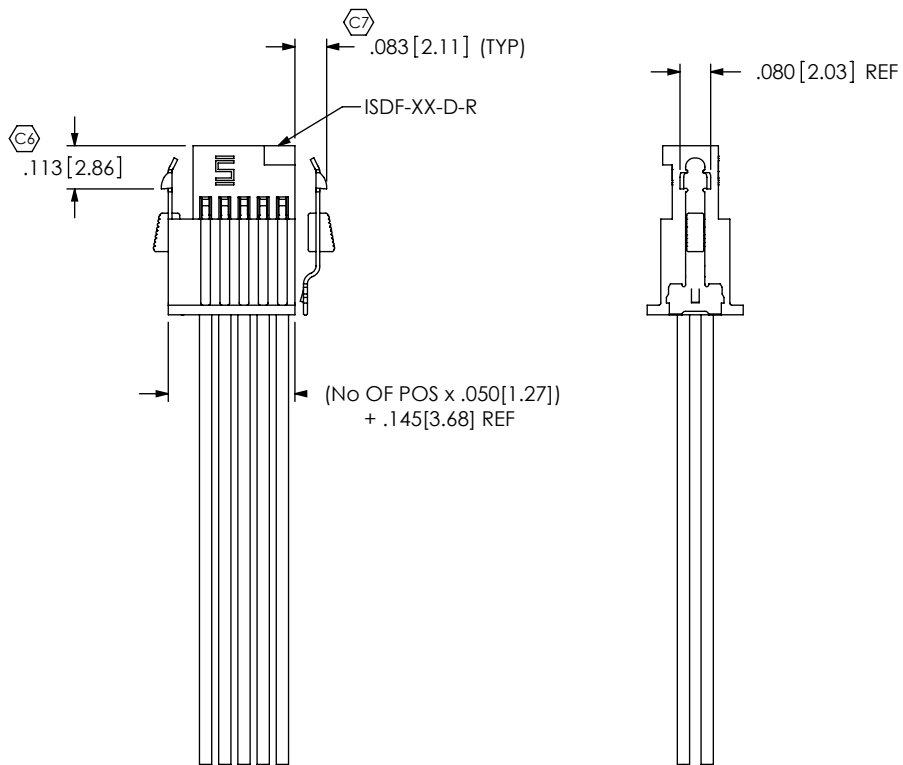
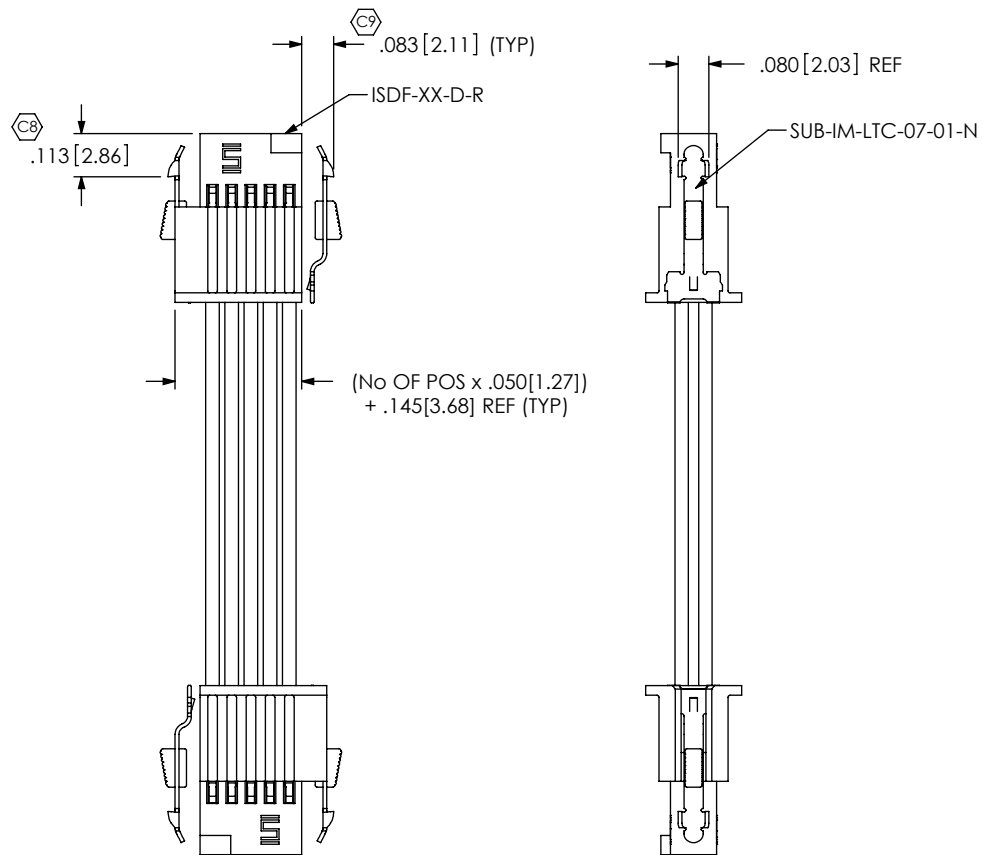


FIG. 6
 -DR: DOUBLE END WITH RETENTION LATCH
 (SFSD-10-28-X-XX.XX-DR SHOWN)
 (ONLY AVAILABLE ON -05 THRU -30 POS)
 (SAME AS FIG. 1, UNLESS OTHERWISE STATED)



J

SFSD color coded wire sequence

	COLOR									
	brown	red	orange	yellow	dk green	violet	gray	white	black	dk blue
pin #	1	2	3	4	5	6	7	8	9	10
	11	12	13	14	15	16	17	18	19	20
	21	22	23	24	25	26	27	28	29	30
	31	32	33	34	35	36	37	38	39	40
	41	42	43	44	45	46	47	48	49	50
	51	52	53	54	55	56	57	58	59	60
	61	62	63	64	65	66	67	68	69	70
	71	72	73	74	75	76	77	78	79	80
	81	82	83	84	85	86	87	88	89	90
	91	92	93	94	95	96	97	98	99	100

F:\DWG\SW\Exisprod\ASSEMBLY\Cable\SFSD-XX-XX-X-XX.XX-XXX-ASM.SLDDRW

PROPRIETARY NOTE
 THIS DOCUMENT CONTAINS INFORMATION CONFIDENTIAL AND PROPRIETARY TO SAMTEC, INC. AND SHALL NOT BE REPRODUCED OR TRANSFERRED TO OTHER DOCUMENTS OR DISCLOSED TO OTHERS OR USED FOR ANY PURPOSE OTHER THAN THAT WHICH IT WAS OBTAINED WITHOUT THE EXPRESSED WRITTEN CONSENT OF SAMTEC, INC.

DO NOT SCALE DRAWING

SHEET SCALE: 4:1



520 PARK EAST BLVD, NEW ALBANY, IN 47150
 PHONE: 812-944-6733 FAX: 812-948-5047
 e-Mail: info@SAMTEC.com code: 55322

DESCRIPTION:
 .050 [1.27] SOCKET DISCRETE CABLE ASSEMBLY

DWG. NO. **J** SFSD-XX-XXX-X-XX.XX-XX-XXX

BY: BRATCHER 5/5/2005 SHEET 4 OF 4