

Fig. 1

- Single row interconnects having an even number of pins are now available with a left or right hand footprint.
- Headers (850 & 852) use MM# 4006 pins. (See page 166 for details)
- Sockets (851 & 853) use MM# 4890-0 receptacles and accept pin diameters from .015-.021. (See page 129 for details)
- Coplanarity .005" (Single Row max 20 pins; Double Row max 40 pins) for higher pin counts contact tech support .
- Insulators are high temp. thermoplastic.

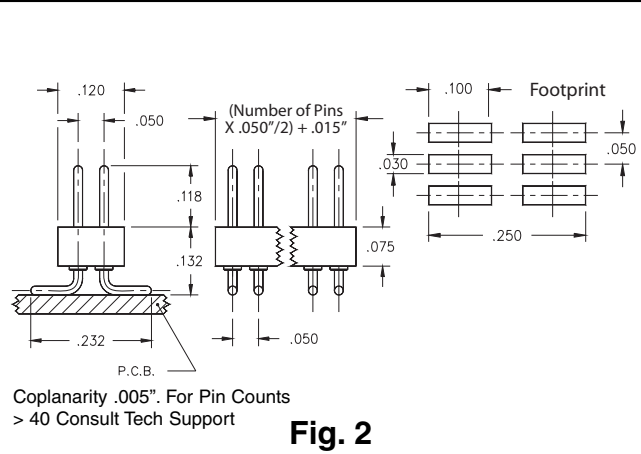
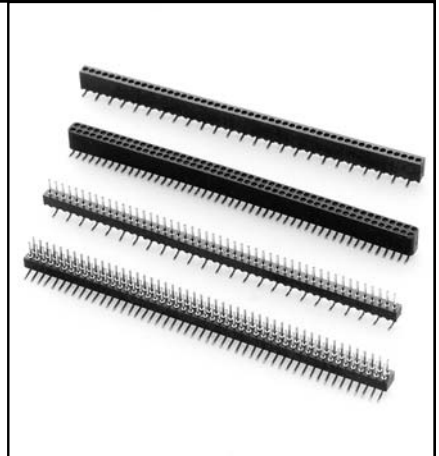


Fig. 2

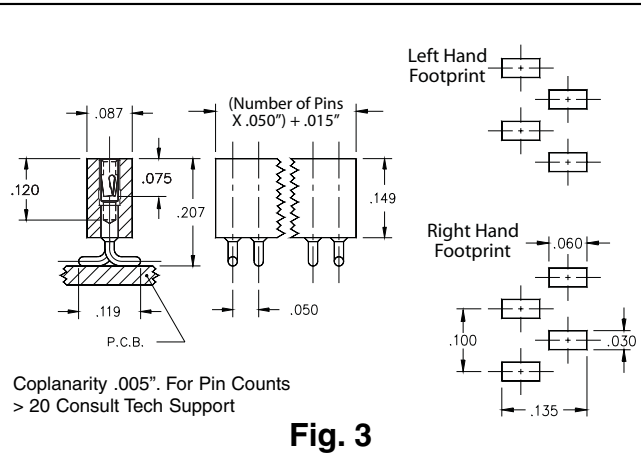


Fig. 3

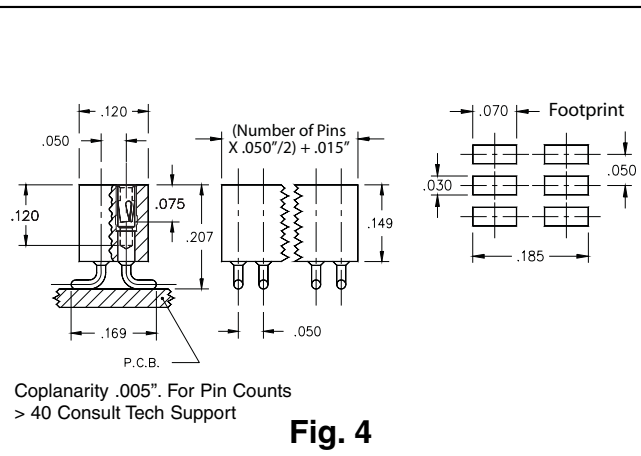


Fig. 4

Ordering Information

Fig. 1L	Single Row Header, Left Hand Footprint Odd or Even # of pins					
	850-XX-0__-30-001000 Specify # of pins → 01-50					
Fig. 1R	Single Row Header, Right Hand Footprint Even # of pins					
	850-XX-0__-30-002000 Specify even # of pins → 02-50					
Fig. 2	Double Row Header, Even # of pins					
	852-XX-__-30-001000 Specify even # of pins → 004-100					
SPECIFY PLATING CODE XX=		10◇	90	40◇		
Pin Plating		10μ" Au	200μ" Sn/Pb	200μ" Sn		
Fig. 3L	Single Row Socket, Left Hand Footprint Odd or Even # of pins					
	851-XX-0__-30-001000 Specify # of pins → 01-50					
Fig. 3R	Single Row Socket, Right Hand Footprint Even # of pins					
	851-XX-0__-30-002000 Specify even # of pins → 02-50					
Fig. 4	Double Row Socket, Even # of pins					
	853-XX-__-30-001000 Specify even # of pins → 004-100					
SPECIFY PLATING CODE XX=		13◇	93	99	43◇	44◇
Sleeve (Pin)		10μ" Au	200μ" Sn/Pb	200μ" Sn/Pb	200μ" Sn	200μ" Sn
Contact (Clip)		30μ" Au	30μ" Au	200μ" Sn/Pb	30μ" Au	200μ" Sn

