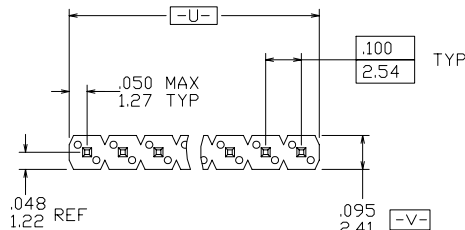


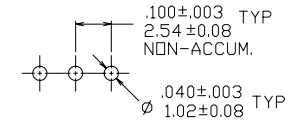
PRODUCT NUMBER

XXXXX-YYYHTLF

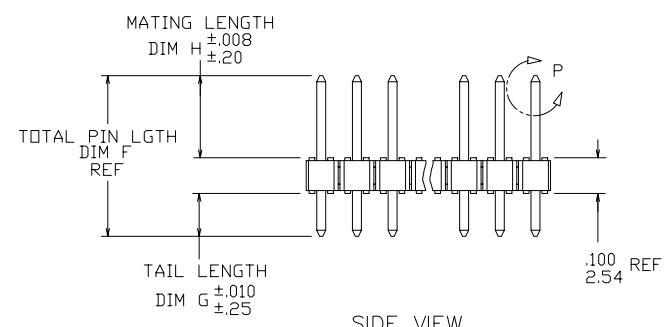
- LEAD FREE OPTION
SEE NOTE 1,11
- TUBE PACKAGING OPTION
SEE NOTE 1
- HIGH TEMPERATURE PLASTIC
SEE NOTE 1
- NO. OF POSITIONS
SEE NOTE 1
- PIN PLATING
SEE SHEET 2
- BASE PART NO.



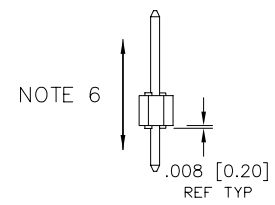
TOP VIEW



RECOMMENDED HOLE PATTERN



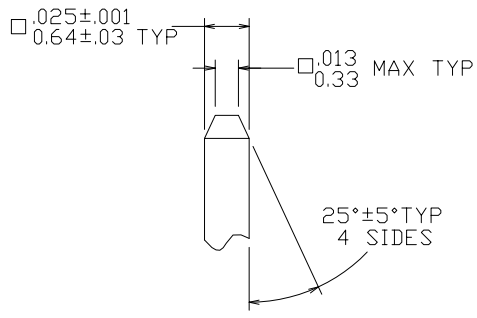
SIDE VIEW



END VIEW

⊕ ∅ .020/.51 M U M V S

NOTE 4



DETAIL P
TYP BOTH ENDS

mat'l. code NOTES 2 & 3		surface ISO 1302 ✓		tolerance ISO 406 ISO 1101		projection INCH/MM		product family BERGSTIK	
ltr ecn no dr		date		tolerances unless otherwise specified		INCH/MM		title	
AC	v70890	HTB	5/04/97	angles	linear	.xx±.01/0.3		BERGSTIK® II HEADER	
AD	v71402	HTB	9/25/97			.xxx±.005/0.13		.100 SR SELF-RET	
AE	v20790	GIP	4/24/02	0°±2'		.xxx±.0020/0.051		scale 2:1	
AF	M04-0234	MHT	12/19/04	dr	D. WHITING	4/19/93		dwg no sheet 1 of 4 size	
AG	M05-0072	MHT	5/03/05	enfr	T. HANNA	4/19/93		69190 A3	
AH	M06-0269	MNR	7/17/06	chr	T. BREWBAKER	4/19/93		type Product Customer Drawing	
AJ	M06-0346	MHT	9/04/06	appd	T. HANNA	4/19/93			
sheet index	revision	AJ	AJ	AJ	AJ				
	sheet	1	2	3	4				

PIN PLATING CODES:

XXXX-1YY	30u"/0.76u MIN (SEE NOTE 12) OVER 50u"/1.27u MIN Ni
XXXX-2YY	15u"/0.38u MIN (SEE NOTE 12) OVER 50u"/1.27u MIN Ni
XXXX-3YY	50u"/1.27u MIN Au OVER 50u"/1.27u MIN Ni
XXXX-4YY	100u"/2.54u MIN Sn OVER 50u"/1.27u MIN Ni (SEE NOTE 13)
XXXX-4YYHLF	
XXXX-5YY	15u"/0.38u MIN (SEE NOTE 12) OVER 50u"/1.27u MIN Ni
XXXX-6YY	30u"/0.76u MIN (SEE NOTE 12) OVER 50u"/1.27u MIN Ni
XXXX-7YY	30u"/0.76u MIN Au OVER 50u"/1.27u MIN Ni
XXXX-8YY	15u"/0.38u MIN Au OVER 50u"/1.27u MIN Ni
XXXX-9YY	15u"/0.38u MIN GXT OVER 50u"/1.27u MIN Ni
XXXX-0YY	30u"/0.76u MIN GXT OVER 50u"/1.27u MIN Ni

NOTES

① PART NUMBER OPTIONS:

PIN PLATING CODES (SEE ABOVE)

HIGH TEMP. MATERIAL:

FOR HIGH-TEMPERATURE APPLICATIONS, SPECIFY AN "H" AT THE END OF THE PART NUMBER, AND PCT WILL BE SUPPLIED.

NUMBER OF POSITION:

ANY NUMBER OF POSITIONS FROM 2 THRU 36.

PACKAGING:

PACKAGED IN POLY BAGS.

EIGHT DIGIT PART NUMBERS FOLLOWED BY A "T" ARE PACKAGED IN TUBES. SEE SPECIFIC PART NUMBERS FOR AVAILABILITY.

LEAD FREE:

ADD "HLF" SUFFIX AT THE END OF PART NUMBER FOR LEAD FREE OPTION, NOT AVAILABLE FOR -5YY,-5YYH,-6YY & -6YYH.

② BODY MATERIAL:

MANUFACTURER'S OPTION OF NYLON OR PCT, GLASS FIBER REINFORCED, FLAME RETARDENT PER UL-94V-0. COLOR: BLACK.

PART NUMBERS WITH "H" SUFFIX WILL WITHSTAND EXPOSURE TO 260°C PEAK TEMPERATURE FOR 20 SECONDS IN WAVE SOLDER, INFRA-RED OR VAPOR PHASE SOLDER PROCESS.

PART NUMBERS WITHOUT "H" SUFFIX WILL WITHSTAND EXPOSURE TO 260°C PEAK TEMPERATURE FOR WAVE SOLDER PROCESS.

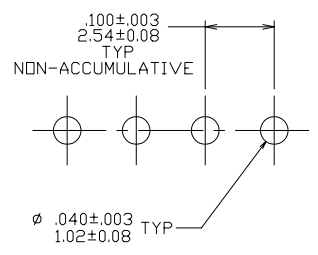
- ③. PIN MATERIAL: PHOS-BRONZE.
- ④. MEASURED WITH PART IN RESTRAINED CONDITION.
- 5. TWO SIDES OF PIN TIPS NOT PLATED. TYPICAL BOTH ENDS.
- ⑥. 2LBS/0.9KG MIN PIN RETENTION IN EITHER DIRECTION.
- ⑦. ±.010/0.25 TOL APPLIES TO ALL 'G' TAILS EXCEPT INDICATED PARTS ON TABLE WHERE +.010/0.25 -.000/0.00 APPLIES.
- ⑧. DETAIL N DIMENSIONS APPLY TO 2 POSITION PARTS ONLY
- ⑨. SECTION R-R DIMENSIONS ONLY APPLY TO RETENTION. PIN POSITIONS FOR 3 POSITION PARTS AND LARGER. RETENTION PIN POSITIONS LOCATED AT MANUFACTURER'S OPTION.
- 10. 5LB/2.3KG MAX INSERTION FORCE AND .25LB/.1KG MIN RETENTION FORCE PER RETENTIVE PIN USING .062/1.57 THICK CIRCUIT BOARDS AND RECOMMENDED HOLE PATTERN.
- ⑪. THESE PRODUCTS MEETS EUROPEAN UNION DIRECTIVES AND OTHER COUNTRY REGULATION AS DESCRIBED IN GS-22-008.
- ⑫. PLATING OPTIONS: MAY BE EITHER GOLD OR GXT PLATED AT MANUFACTURER'S OPTION.
- ⑬. "THIS PRODUCT HAS 100% TIN PLATING IN THE INTERFACE AND HAS NOT BEEN TESTED FOR WHISKER GROWTH IN ALL INTERCONNECT ENVIRONMENTS."



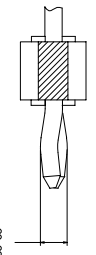
Copyright FCI

mat'l. code		surface ISO 1302 ✓		tolerance ISO 406 ISO 1101		projection ⊕		product family BERGSTIK	
ltr		ecn no		dr		date		title	
AJ								BERGSTIK® II HEADER .100 SR SELF-RET	
		angles		linear		.xx±.01/.3		INCH/MM	
		0°±2'				.xxx±.005/.13		scale 2:1	
				dr		E. KROPIEWICKI 7/31/95		dwg no	
				enr		T. BREWBAKER 7/31/95		sheet 2 of 4 size	
				chr		T. BREWBAKER 7/31/95		69190 A3	
				app		T. BREWBAKER 7/31/95		type Product Customer Drawing	
sheet index		revision sheet							

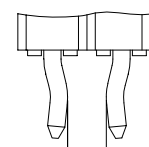
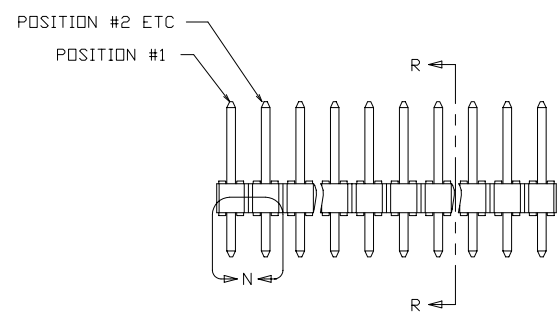
1 | 2 | 3 | 4 | 5 | 6



RECOMMENDED HOLE PATTERN



SECTION R-R
NOTE 9



TWO POSITION
DETAIL N
NOTE 8



FCIconnect.com

Copyright FCI

mat'l. code		surface ISO 1302 ✓		tolerance ISO 406 ISO 1101		projection ⊕		product family BERGSTIK	
ltr	ecn	no	dr	date		tolerances unless otherwise specified		title	
AJ						angles	linear	BERGSTIK® II HEADER	
						0°±2'	.xx±.01/.3 .xxx±.005/.13 .xxxx±.0020/.051	.100 SR SELF-RET	
						dr	E. KRPIEWNICKI	7/31/95	dwg no
						enr	T. BREWBAKER	7/31/95	sheet 3 of 4 size
						chr	T. BREWBAKER	7/31/95	69190 A3
						app	T. BREWBAKER	7/31/95	type Product Customer Drawing
sheet index	revision sheet								

form: A3 | 1 | 2 | 3 | 4 | 5 | 6

PRODUCT NUMBER	TOTAL PIN LENGTH		TAIL LENGTH		MATING LENGTH		PACKAGING	NOTE	LF OPTION
	DIM F	DIM F	DIM G	DIM G	DIM H	DIM H			
	ENGLISH	METRIC	ENGLISH	METRIC	ENGLISH	METRIC			
69190-YYY	0.450	11.43	0.120	3.05	0.230	5.84	POLY BAGS/TUBES	-	NOTE 1,11 ↓
72348-YYYH	0.515	13.08	0.120	3.05	0.295	7.49	POLY BAGS	-	
78229-YYY	0.538	13.67	0.120	3.05	0.318	8.08	POLY BAGS/TUBES	-	
78250-YYY	U N A V A I L A B L E							-	
78538-YYY	0.620	15.75	0.120	3.05	0.400	10.16	POLY BAGS	-	
78594-YYY	0.760	19.30	0.120	3.05	0.540	13.72	POLY BAGS	-	
79429-YYY	0.695	17.65	0.120	3.05	0.475	12.07	POLY BAGS	-	
79978-YYY	0.450	11.43	0.120	3.05	0.230	5.84	POLY BAGS/TUBES	7	
86505-YYY	0.440	11.18	0.120	3.05	0.220	5.59	POLY BAGS	-	
87036-YYY	0.830	21.08	0.120	3.05	0.610	15.49	POLY BAGS	-	
87068-YYY	0.530	13.46	0.115	2.92	0.315	8.00	POLY BAGS	-	
87280-YYY	1.000	25.40	0.120	3.05	0.780	19.81	POLY BAGS	-	
87452-YYY	0.840	21.34	0.120	3.05	0.620	15.75	POLY BAGS	-	
87453-YYY	0.990	25.15	0.120	3.05	0.770	19.56	POLY BAGS	-	
87918-YYY	0.730	18.54	0.120	3.05	0.510	12.95	POLY BAGS	-	
90603-YYY	0.430	10.92	0.100	2.54	0.230	5.84	POLY BAGS	-	
90610-YYY	0.927	23.55	0.100	2.54	0.727	18.47	POLY BAGS	-	
94549-YYYH	0.415	10.54	0.085	2.16	0.230	5.84	POLY BAGS	-	
									NOTE 1,11



FCJconnect.com

Copyright FCJ

mat'l. code		surface ISO 1302 <input checked="" type="checkbox"/>		tolerance ISO 406 ISO 1101		projection 		product family BERGSTIK	
ltr		ecn no		dr		date		tolerances unless otherwise specified	
AJ								linear .xx±.01/.3	
								INCH/MM	
								.xxx±.005/.13	
								scale 2:1	
								.xxxx±.0020/.051	
								dr E. KROPIEWICKI 7/31/95	
								enr T. BREWBAKER 7/31/95	
								chr T. BREWBAKER 7/31/95	
								app T. BREWBAKER 7/31/95	
sheet index		revision sheet						FCJ	
								dwg no 69190 sheet 4 of 4 size A3	
								type Product Customer Drawing	

form: A3