

- Others (please consult us)
- 9 shell sizes from 08 to 24
- **Contacts**
 - More than 50 arrangements of contacts, including high density versions
 - Size 12, 16, 20, 22 D contacts
 - Crimp, PCB, signal and power contacts (cable soldering contacts are not included in this brochure, please consult us)
- **Contact protection**
 - improved interfacial seal ensures sealing around each contact
- **EMI/RFI protection**
 - Optional grounding fingers on the plug shell
- **Very low profile and light weight**

Additional information

- **Contacts**
(please refer to data sheet E114)
- **Tooling**
(please refer to data sheet E119)
- **Rear accessories**
(please refer to data sheet E121)

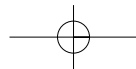
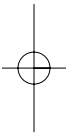
*Light weight &
space saving
designed
connectors for
aerospace*

- Military and aeronautic applications
- Applications requiring very low profile



Amphenol

PRINTED CIRCUIT BOARD DRILLING	14
HERMETIC RECEPTACLES	
• Main characteristics	17
• Overall dimensions	
Wall mounting receptacle	17
Box mounting receptacle	18
Jam nut receptacle	18
Solder mounting receptacle	19
ACCESSORIES	
• Protection caps	20
• Plastic dust caps	20
• Standard crimp and PCB contacts	21
• Sealing plugs	21
• Dummy receptacles	21
• Holding support with dummy receptacles	22
• Torque value for rear accessories	22
• Pliers for plugs	22
TOOLING	
• Crimping tools	22
• Insertion and removal tools	22
CONNECTORS ORDERING INFORMATION	
• Aluminium versions	23
• Hermetic versions	23
• Cross references (Amphenol and MIL-DTL-38999 series II designations)	24

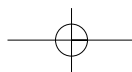


Shell material	Shell finish	Salt spray exposure per MIL. STD 1344/1009	Working temperature	
			mini	maxi
Aluminium	Electroless nickel	48 H	-65°C	+200°C
	Olive Drab cadmium	500 H	-65°C	+175°C

Hermetic shells

Shell material	Shell finish	Salt spray exposure per MIL. STD 1344/1009	Working temperature	
			mini	maxi
Carbon	—	500 H	-65°C	+200°C

- **Humidity:** per MIL - DTL - 38999: § 3.29
- **Air leakage:** < 1.10^{-7} cm³ /s under 1 bar of pressure differential (hermetics only)
- **Fluid resistance (per MIL - DTL - 38999), § 3.33:**
 - MIL-L-7808 (lubricating oil)
 - MIL-L-23699 (lubricating oil)
 - MIL-H-5606 (hydraulic fluid)
 - Hydraulic fluid (Chevron M2V)
 - MIL-A-8243 (defrosting fluid)
 - MIL-C-87936 type I
 - MIL-T-5624 (JP5)
 - MIL-C-47220 or Coolanol 25 or equivalent
 - MIL-G-3056 type I (gasoline)
 - Isopropyl alcohol per TT-I-735 grade A or B mixed with mineral spirit TT-T-291 type 1 or P-D-680 type I



- Insulation resistance

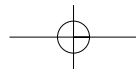
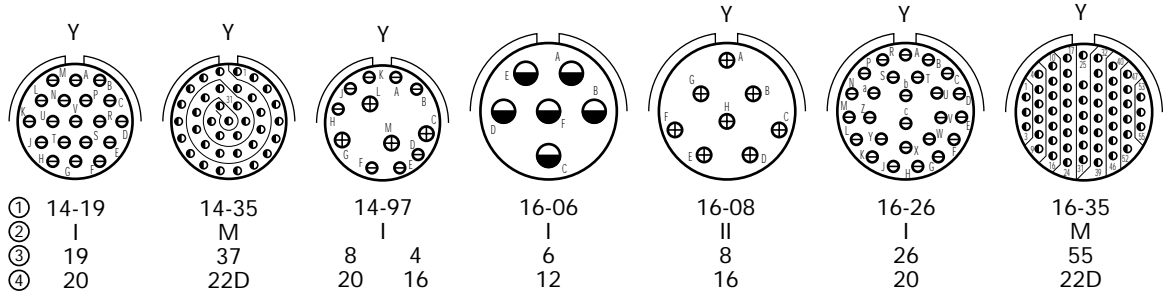
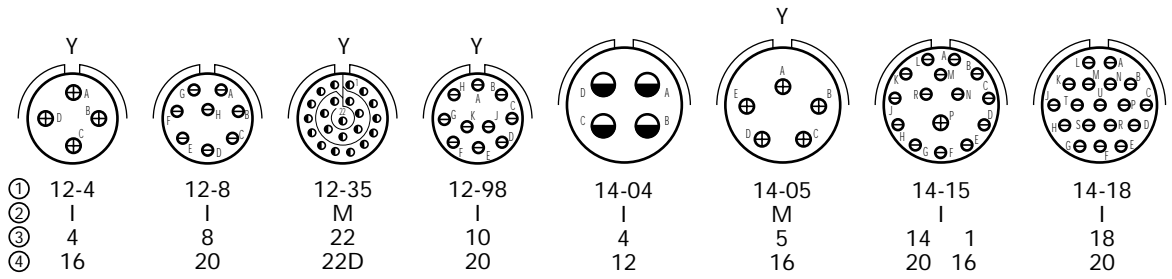
Insulation resistance (500 V)	Crimp	Hermetic
Ambiant temperature	$\geq 10^5 \text{ M}\Omega$	$\geq 5 \times 10^3 \text{ M}\Omega$
Maximal temperature	$\geq 10^3 \text{ M}\Omega$	$\geq 5 \times 10^2 \text{ M}\Omega$

- Service rating

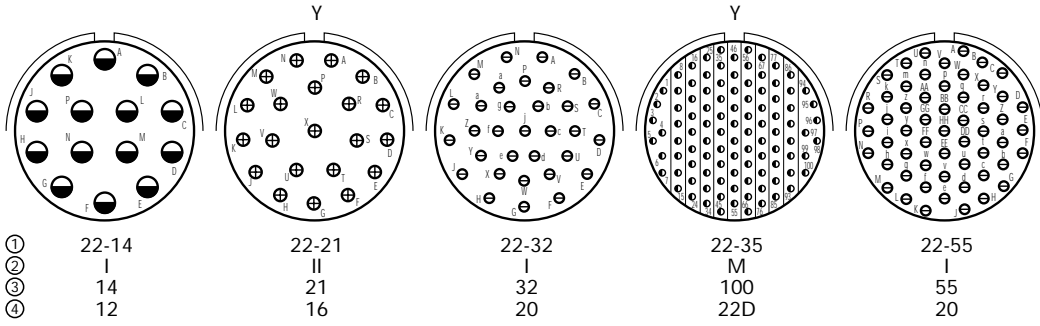
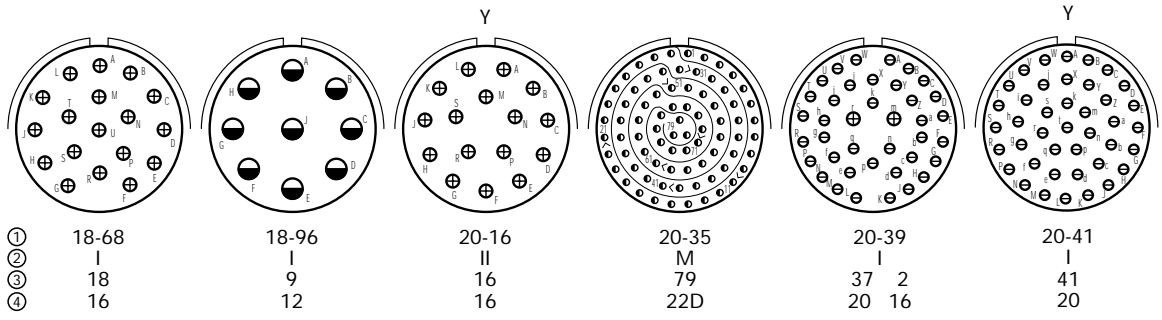
Service	Dielectric withstanding voltage (Vrms)								Working voltage	
	At sea level		15000 meters		21000 meters		34000 meters		Vrms	Vdc
	mated	unmated	mated	unmated	mated	unmated	mated	unmated		
M	1300	1300	800	550	800	350	800	200	400	550
N	1000	1000	—	400	—	260	—	200	300	450
I	1800	1800	1000	600	1000	400	1000	200	600	850
II	2300	2300	1000	800	1000	500	1000	200	900	1250

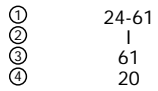
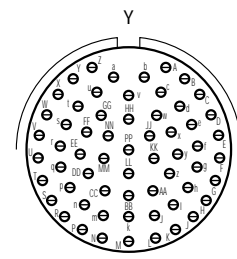
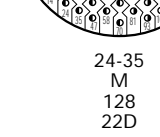
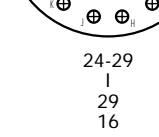
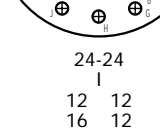
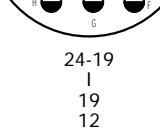
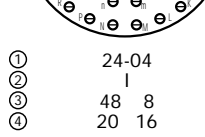
- Dimensions of acceptable contacts and cables

Contact Size	Contact Diameter mm	Crimp barrel		Acceptable cables						
		Diameter mm	Depth mm	Gauge AWG				Outside diameter (mm)		
				Section mm ²				Min	Average	Max
22D	0.76	0.88+/-0.03	3.58	22	24	26	28	0.76	1.20	1.37
				0.38	0.22	0.15	0.095			
20	1	1.19+/-0.03	5.30	20	22	24		1.02	1.83	2.11
				0.60	0.38	0.22				
16	1.57	1.70+/-0.03	5.30	16	18	20		1.68	2.41	2.77
				1.34	0.93	0.60				
12	2.36	2.54+/-0.06	5.30	12	14			2.46	3.20	3.61
				3.30	1.94					

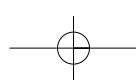


①	18-99	18-11	18-28	18-30	18-32	18-35
②	I	II	I	I	I	M
③	21 2	11	26 2	29 1	32	66
④	20 16	16	20 16	20 16	20	22D





Y: Available in hermetic version



14-15	x	I	15		14	1	
14-18	x	I	18		18		
14-19		I	19		19		
14-35	x	M	37	37			
14-97	x	I	12		8	4	
16-06	x	I	6				6
16-08	x	II	8			8	
16-26	x	I	26		26		
16-35	x	M	55	55			
16-99	x	I	23		21	2	
18-11	x	II	11			11	
18-28	x	I	28		26	2	
18-30		I	30		29	1	
18-32	x	I	32		32		
18-35	x	M	66	66			
18-68		I	18			18	
18-96		I	9				9
20-16	x	II	16			16	
20-35		M	79	79			
20-39	x	I	39		37	2	
20-41	x	I	41		41		
22-14		I	14				14
22-21	x	II	21			21	
22-32		I	32		32		
22-35		M	100	100			
22-55	x	I	55		55		
24-04		I	56		48	8	
24-19		I	19				19
24-24		I	24			12	12
24-29		I	29			29	
24-35		M	128	128			
24-61	x	I	61		61		

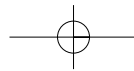


Plug - Front face shown



Receptacle - Front face shown

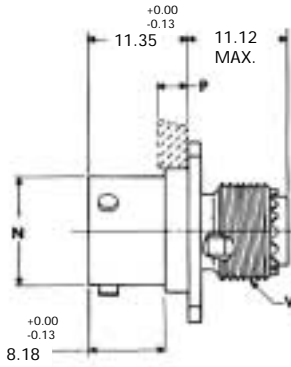
Shell size	Position of the major keyway				
	Normal	References			
		A	B	C	D
8	100°	82°	-	-	118°
10	100°	86°	72°	128°	114°
12	100°	80°	68°	132°	120°
14	100°	79°	66°	134°	121°
16	100°	82°	70°	130°	118°
18	100°	82°	70°	130°	118°
20	100°	82°	70°	130°	118°
22	100°	85°	74°	126°	115°
24	100°	85°	74°	126°	115°



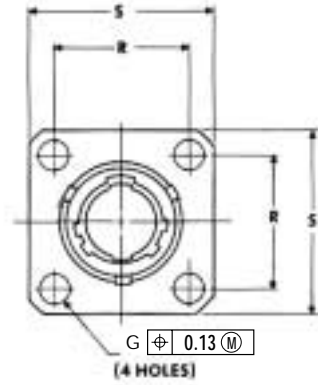
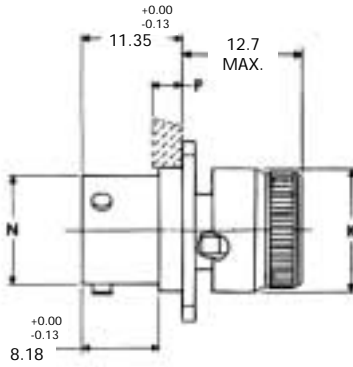
8	12.01	12.70	.4375-28	13.89	14.68	15.09	20.62	3.05
10	14.99	12.70	.5625-24	13.89	17.86	18.26	23.82	3.05
12	19.05	12.70	.6875-24	13.89	21.03	20.62	26.19	3.05
14	22.23	12.70	.8125-20	13.89	24.21	23.01	28.58	3.05
16	25.4	12.70	.9375-20	13.89	27.38	24.61	30.96	3.05
18	28.58	12.70	1.0625-18	13.89	30.56	26.97	33.32	3.05
20	31.75	12.70	1.1875-18	13.89	33.73	29.36	36.53	3.05
22	34.93	12.70	1.3125-18	13.89	36.91	31.75	39.67	3.05
24	38.10	12.70	1.4375-18	13.89	40.08	34.93	42.88	3.73

Wall mounting receptacle (back panel mounting)

JTPQ00 RT
JMS 27497 T



JTPQ00 RE
JMS 27497 E

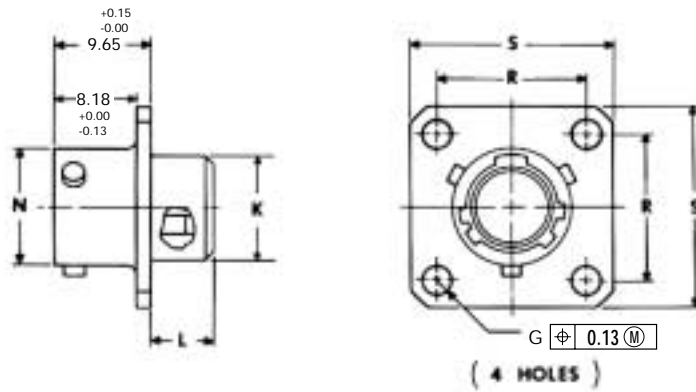


Shell Size	N Dia. +0.025 -0.13	P Max Panel Thickness	V Thread UNEF Class 2A (plated)	K Dia. Max	R	S ±0.41	G ±0.13
8	12.01	3.61	.4375-28	14.68	15.09	20.62	3.05
10	14.99	3.61	.5625-24	17.86	18.26	23.82	3.05
12	19.05	3.61	.6875-24	21.03	20.62	26.19	3.05
14	22.23	3.61	.8125-20	24.21	23.01	28.58	3.05
16	25.4	3.61	.9375-20	27.38	24.61	30.96	3.05
18	28.58	3.61	1.0625-18	30.56	26.97	33.32	3.05
20	31.75	3.61	1.1875-18	33.73	29.36	36.53	3.05
22	34.93	3.61	1.3125-18	36.91	31.75	39.67	3.05
24	38.10	3.61	1.4375-18	40.08	34.93	42.88	3.73

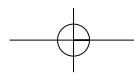
10	14.99	.5625-24	17.86	27.66	23.83
12	19.05	.6875-24	21.03	30.05	26.19
14	22.23	.8125-20	24.21	32.44	28.58
16	25.40	.9375-20	27.38	34.82	30.96
18	28.58	1.0625-18	30.56	37.21	33.32
20	31.75	1.1875-18	33.73	40.36	36.53
22	34.93	1.3125-18	36.91	43.56	39.67
24	38.10	1.4375-18	40.08	46.69	42.88

Box mounting receptacle (front panel mounting)

JT 02 RE
JMS 27499 E



Shell Size	N Dia. +0.025 -0.13	L Max	K Dia. Max	R	S ±0.41	G ±0.13
8	12.01	7.26	11.12	15.09	20.62	3.05
10	14.99	7.26	14.30	18.26	23.82	3.05
12	19.05	7.26	17.47	20.62	26.19	3.05
14	22.23	7.26	20.65	23.01	28.58	3.05
16	25.40	7.26	23.82	24.61	30.96	3.05
18	28.58	7.26	26.59	26.97	33.32	3.05
20	31.75	7.26	29.77	29.36	36.52	3.05
22	34.93	7.26	32.94	31.75	39.67	3.05
24	38.10	7.26	36.12	34.93	42.87	3.73

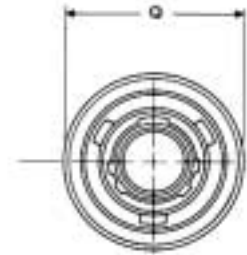
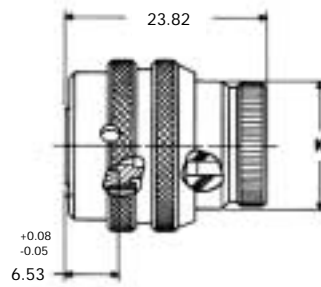
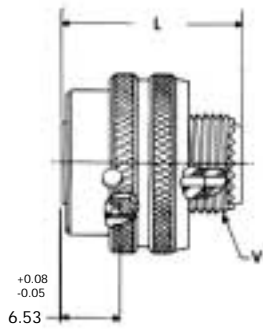


10	14.99	3.86	5.72	16.66	18.26	23.82	3.05
12	19.05	3.86	5.72	21.03	20.62	26.19	3.05
14	22.23	3.86	5.72	24.21	23.01	28.58	3.05
16	25.40	3.86	5.72	27.38	24.61	30.96	3.05
18	28.58	3.86	5.72	30.56	26.97	33.32	3.05
20	31.75	4.55	5.72	33.73	29.36	36.53	3.05
22	34.93	4.55	5.72	36.91	31.75	39.67	3.05
24	38.10	4.29	5.72	40.08	34.93	42.86	3.73

Straight plug

JT06 RT / JTG06 RT
JMS 27473 T / JMS 27484 T

JT06 RE / JTG06 RE
JMS 27473 E / JMS 27484 E

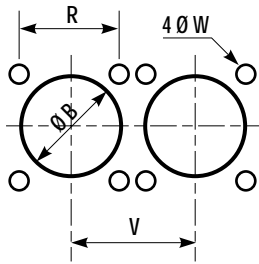


Shell Size	M Max	V Thread UNEF Class 2A Modified	K Dia. Max	Q Dia. Max
8	22.63	.4375-28	14.68	18.64
10	22.63	.5625-24	17.98	21.44
12	22.63	.6875-24	21.03	25.81
14	22.63	.8125-20	24.21	28.98
16	22.63	.9375-20	27.38	32.13
18	22.63	1.0625-18	30.56	35.33
20	22.63	1.1875-18	33.73	38.10
22	22.63	1.3125-18	36.91	41.28
24	22.63	1.4375-18	40.08	44.45

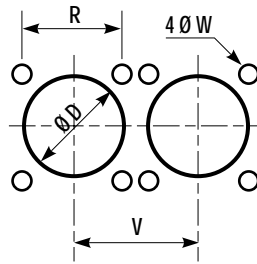
8	12.01	11.12	.8750-20UNEF	11.51	.4375-28	12.29	14.68	35.31	26.97	31.75	5.65
10	14.99	11.12	1.0000-20UNEF	11.51	.5625-24	12.29	17.86	38.48	30.17	34.93	6.78
12	19.05	11.12	1.1250-18UNEF	11.51	.6875-24	12.29	21.03	41.66	33.32	38.10	8.48
14	22.23	11.12	1.2500-18UNEF	11.51	.8125-20	12.29	24.21	44.83	36.53	41.28	9.61
16	25.40	11.12	1.3750-18UNEF	11.51	.9375-20	12.29	27.38	49.61	39.67	45.24	10.74
18	28.58	11.12	1.5000-18UNEF	11.51	1.0625-18	12.29	30.56	51.59	42.87	48.01	12.43
20	31.75	11.79	1.6250-18UNEF	10.72	1.1875-18	11.51	33.73	54.76	46.02	51.21	13.56
22	34.93	11.79	1.7500-18UNS	10.72	1.3125-18	11.51	36.91	57.91	50.80	54.36	14.69
24	38.10	11.79	1.8750-16UN	10.72	1.4375-18	9.53	40.08	61.09	53.98	57.53	16.95

Panel drilling for wall mounting and jam nut receptacles

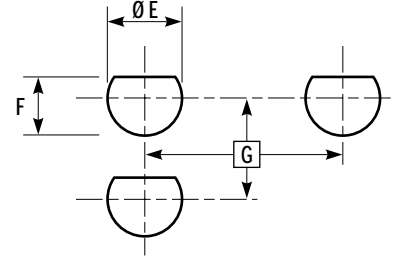
Square flange receptacle
back panel mounting



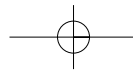
Square flange receptacle
front panel mounting

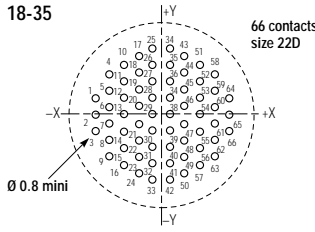
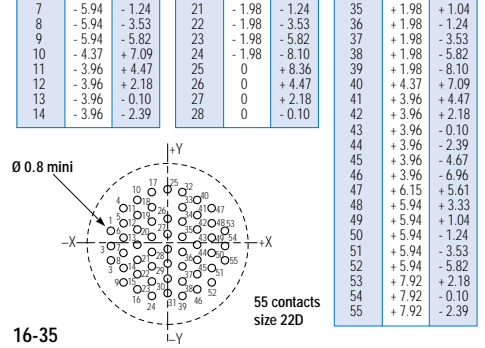
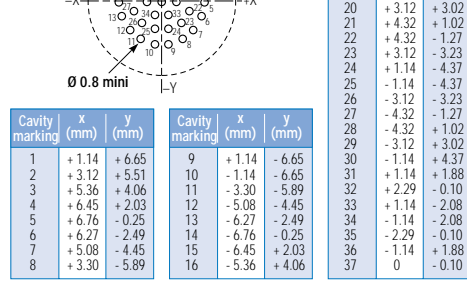


Jam nut receptacle
back panel mounting

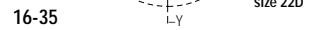


Shell Size	R (mm)	B Min (mm)	V Min (mm)	W ± 0.13 (mm)	D Min (mm)	E Min (mm)	F $+0 -0.25$ (mm)	G Min (mm)
8	15.09	14.30	21.45	3.25	11.63	22.46	21.08	32.90
10	18.26	17.27	24.65	3.25	14.81	25.58	24.26	36.00
12	20.63	21.82	27.00	3.25	17.98	28.80	27.53	39.60
14	23.01	24.99	29.80	3.25	21.16	31.98	30.68	43.30
16	24.61	28.14	32.95	3.25	24.61	35.15	33.86	47.00
18	26.97	31.32	36.15	3.25	27.51	38.28	37.06	50.60
20	29.36	34.49	38.90	3.25	30.68	41.50	40.03	54.20
22	31.75	37.67	42.10	3.25	33.86	44.68	43.21	59.70
24	34.93	40.89	45.25	3.95	37.03	47.85	46.38	63.30





Cavity marking	x (mm)	y (mm)
35	+1.14	+6.86
36	+1.14	+4.57
37	+1.14	+2.29
38	+1.14	0
39	+1.14	-2.29
40	+1.14	-4.57
41	+1.14	-6.86
42	+1.14	-9.14
43	+3.12	+8.00
44	+3.12	+5.72
45	+3.12	+3.43
46	+3.12	+1.14
47	+3.12	-1.14
48	+3.12	-3.43
49	+3.12	-5.72
50	+3.12	-8.00
51	+5.11	-6.86
52	+5.11	+4.57
53	+5.11	+2.29
54	+5.11	0
55	+5.11	-2.29
56	+5.11	-4.57
57	+5.11	-6.86
58	+7.09	+5.72
59	+7.09	+3.43
60	+7.09	+1.14
61	+7.09	-1.14
62	+7.09	-3.43
63	+7.09	-5.72
64	+9.07	+2.29
65	+9.07	0
66	+9.07	-2.29



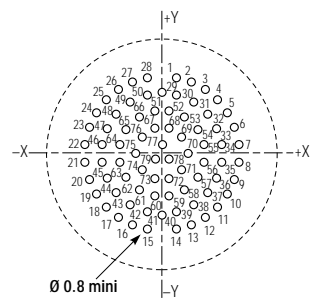
Cavity marking	x (mm)	y (mm)
1	+1.35	+10.82
2	+3.71	+10.26
3	+5.89	+9.19
4	+7.77	+7.67
5	+9.27	+5.77
6	+10.31	+3.58
7	+10.85	+1.22
8	+10.85	-1.22
9	+10.31	-3.58
10	+9.27	-5.77
11	+7.77	-7.67
12	+5.89	-9.19
13	+3.71	-10.26
14	+1.35	-10.82
15	-1.35	-10.82
16	-3.71	-10.26
17	-5.89	-9.19
18	-7.77	-7.67
19	-9.27	-5.77
20	-10.31	-3.58
21	-10.85	-1.22
22	-10.85	+1.22
23	-10.31	+3.58
24	-9.27	+5.77
25	-7.77	+7.67
26	-5.89	+9.19
27	-3.71	+10.26

Cavity marking	x (mm)	y (mm)
28	-1.35	+10.82
29	0	+8.20
30	+2.49	+8.18
31	+4.67	+7.11
32	+6.55	+5.59
33	+7.90	+3.58
34	+8.43	+1.22
35	+8.43	-1.22
36	+7.90	-3.58
37	+6.55	-5.59
38	+4.67	-7.11
39	+2.49	-8.18
40	0	-8.84
41	-2.49	-8.18
42	-4.67	-7.11
43	-6.55	-5.59
44	-7.90	-3.58
45	-8.43	-1.22
46	-8.43	+1.22
47	-7.90	+3.58
48	-6.55	+5.59
49	-4.67	+7.11
50	-2.49	+8.18
51	-1.22	+6.12
52	+1.22	+6.12
53	+3.40	+5.05
54	+5.28	+3.53

Cavity marking	x (mm)	y (mm)
55	+6.02	+1.22
56	+6.02	-1.22
57	+5.28	-3.53
58	+3.40	-5.05
59	+1.22	-6.12
60	-1.22	-6.12
61	-3.40	-5.05
62	-5.28	-3.53
63	-6.02	-1.22
64	-6.02	+1.22
65	-5.28	+3.53
66	-3.40	+5.05
67	-1.22	+3.71
68	-1.22	+3.71
69	+3.18	+2.29
70	+3.94	0
71	+3.18	-2.29
72	+1.22	-3.71
73	+1.22	-3.71
74	-3.18	-2.29
75	-3.94	0
76	-3.18	+2.29
77	0	+1.35
78	+1.22	-0.74
79	-1.22	-0.74

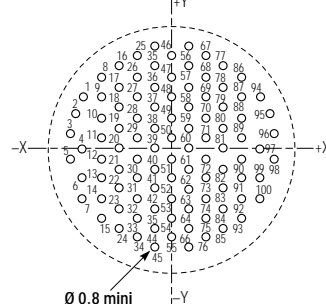
20-35

79 contacts size 22D



22-35

100 contacts size 22D



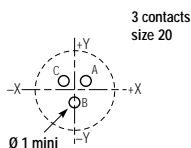
8	-10.77	+9.07	30	-6.32	0	52	-2.11	+2.41	74	+2.11	+4.83	96	+6.32	+7.24	118	+10.54	0
9	-10.54	+4.83	31	-6.32	-2.41	53	-2.11	0	75	+2.11	+2.41	97	+6.32	+4.83	119	+10.54	-2.41
10	-10.54	+2.41	32	-6.32	-4.83	54	-2.11	-2.41	76	+2.11	0	98	+6.32	+2.41	120	+10.54	-4.83
11	-10.54	0	33	-6.32	-7.24	55	-2.11	-4.83	77	+2.11	-2.41	99	+6.32	0	121	+10.77	-9.07
12	-10.54	-2.41	34	-6.32	-9.65	56	-2.11	-7.24	78	+2.11	-4.83	100	+6.32	-2.41	122	+12.07	+7.09
13	-10.54	-4.83	35	-6.32	-12.07	57	-2.11	-9.65	79	+2.11	-7.24	101	+6.32	-4.83	123	+13.21	+4.83
14	-10.77	-9.07	36	-4.06	+13.49	58	-2.11	-12.07	80	+2.11	-9.65	102	+6.32	-7.24	124	+13.87	+2.41
15	-8.43	+11.28	37	-4.22	+10.85	59	0	+13.26	81	+2.11	-12.07	103	+6.32	-9.65	125	+14.10	0
16	-8.43	+8.43	38	-4.22	+8.43	60	0	+10.85	82	+4.06	+13.49	104	+6.32	-12.07	126	+13.87	-2.41
17	-8.43	+6.02	39	-4.22	+6.02	61	0	+8.43	83	+4.22	+10.85	105	+8.43	+11.28	127	+13.21	-4.83
18	-8.43	+3.61	40	-4.22	+3.61	62	0	+6.02	84	+4.22	+8.43	106	+8.43	+8.43	128	+12.17	-7.09
19	-8.43	+1.19	41	-4.22	+1.19	63	0	+3.61	85	+4.22	+6.02	107	+8.43	+6.02			
20	-8.43	-1.19	42	-4.22	-1.19	64	0	+1.19	86	+4.22	+3.61	108	+8.43	+3.61			
21	-8.43	-3.61	43	-4.22	-3.61	65	0	-1.19	87	+4.22	+1.19	109	+8.43	+1.19			
22	-8.43	-6.02	44	-4.22	-6.02	66	0	-3.61	88	+4.22	-1.19	110	+8.43	-1.19			

Receptacles equipped with size 20 contacts

The marking of contact cavities is shown on the mating side view of the male receptacle. The marking on the female plug is symmetrical in relation to the +X/-Y axis.

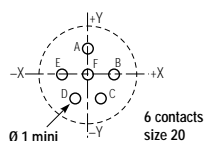
Cavity marking	x (mm)	y (mm)
A	+1.65	+0.97
B	0	-1.91
C	-1.65	+0.97

08-98

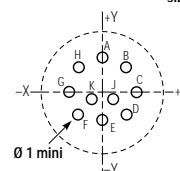


Cavity marking	x (mm)	y (mm)
A	0	+3.30
B	+3.30	0
C	+1.65	-2.87
D	-1.65	-2.87
E	-3.30	0
F	0	0

10-98



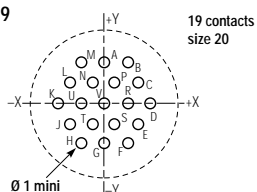
10 contacts size 20



12-98

Cavity marking	x (mm)	y (mm)
A	0	+4.95
B	+3.18	+3.81
C	+4.90	+0.76
D	+4.17	-2.67
E	0	-3.43
F	-4.17	-2.67
G	-4.90	+0.76
H	-3.18	+3.81
J	+1.65	-0.38
K	-1.65	-0.38

14-19



Cavity marking	x (mm)	y (mm)
A	0	+5.72
B	+3.30	+5.72

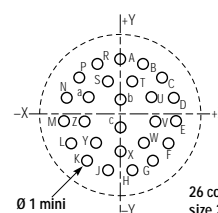
Cavity marking	x (mm)	y (mm)
C	+4.95	+2.87
D	+6.60	0

Cavity marking	x (mm)	y (mm)
E	+4.95	-2.87
F	+3.30	-5.72
G	0	-5.72
H	-3.30	-5.72
J	-4.95	-2.87
K	-6.60	0
L	-4.95	+2.87
M	-3.30	+5.72
N	-1.65	+2.87
P	+1.65	+2.87
R	+3.30	0
S	+1.65	-2.87
T	-1.65	-2.87
U	-3.30	0
V	0	0

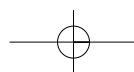
Cavity marking	x (mm)	y (mm)
A	0	+8.15
B	+3.33	+7.44
C	+6.07	+5.44
D	+7.75	+2.51

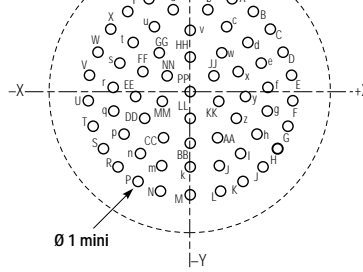
Repere contact	x (mm)	y (mm)
E	+8.10	-0.86
F	+7.06	-4.09
G	+4.80	-6.60
H	+1.70	-7.98

Cavity marking	x (mm)	y (mm)
J	-1.70	-7.98
K	-4.80	-6.60
L	-7.06	-4.09
M	-8.10	-0.86
N	-7.75	+2.51
P	-6.07	+5.44
R	-3.33	+7.44
S	-1.78	+4.50
T	+1.78	+4.50
U	+4.45	+2.39
V	+4.52	-0.91
W	+3.02	-3.84
X	0	+5.16
Y	-3.02	-3.84
Z	-4.52	-0.91
a	-4.45	+2.39
b	0	+1.65
c	0	-1.65



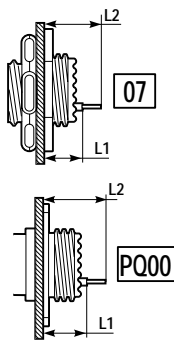
16-26





Cavity marking	x (mm)	y (mm)	Cavity marking	x (mm)	y (mm)	Cavity marking	x (mm)	y (mm)
A	+4.98	+12.70	Y	-7.98	+11.05	v	0	+8.59
B	+7.98	+11.05	Z	-4.98	+12.70	w	+3.73	+8.66
C	+10.49	+8.71	a	-1.73	+11.53	x	+6.02	+3.10
D	+12.32	+5.84	b	+1.73	+11.53	y	+6.78	-0.25
E	+13.39	+2.57	c	+4.39	+9.22	z	+5.79	-3.53
F	+13.61	-0.76	d	+7.24	+7.19	AA	+3.33	-5.92
G	+12.98	-4.17	e	+9.19	+4.45	BB	0	-6.78
H	+11.53	-7.29	f	+10.13	+1.17	CC	-3.33	-5.92
J	+9.35	-9.93	g	+9.96	-2.24	DD	-5.79	-3.53
K	+6.58	-11.94	h	+8.66	-5.41	EE	-6.78	-0.25
L	+3.40	-13.18	i	-7.98	-7.98	FF	-6.02	+3.10
M	0	-13.64	j	+6.38	-9.63	GG	-3.73	+5.66
N	-3.40	-13.18	k	+3.38	-10.21	HH	0	+5.08
P	-6.58	-11.94	m	0	-9.63	JJ	+2.67	+2.39
R	-9.35	-9.93	n	-3.38	-7.98	KK	+3.43	-1.04
S	-11.53	-7.29	p	-6.38	-5.41	LL	0	-3.35
T	-12.98	-4.17	q	-8.65	-2.24	MM	-3.43	-1.04
U	-13.61	-0.76	r	-9.96	+1.17	NN	-2.67	+2.39
V	-13.39	+2.57	s	-10.13	+4.45	PP	0	0
W	-12.32	+5.84	t	-9.19	+7.19			
X	-10.49	+8.71	u	-7.24	+9.22			

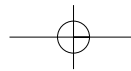
Standard PCB - tail dimensions at the rear of receptacles (in mm)



			JT 07 CI		JTPQ 00 CI
			Shell sizes 08 to 18	Shell sizes 20 to 24	Shell sizes 08 to 24
P	L1	min	12.26	11.60	12.17
		max	13.23	12.57	13.01
P	L2	min	17.16	16.50	17.07
		max	18.33	17.67	18.11
S (F423)	L1	min	12.06	11.40	11.97
		max	13.03	12.37	12.81
S (F423)	L2	min	15.96	15.30	15.87
		max	17.13	16.47	16.91

Note: dimensions given for pin contacts with 5 mm PCB-tails and socket contacts with 4 mm PCB tails.

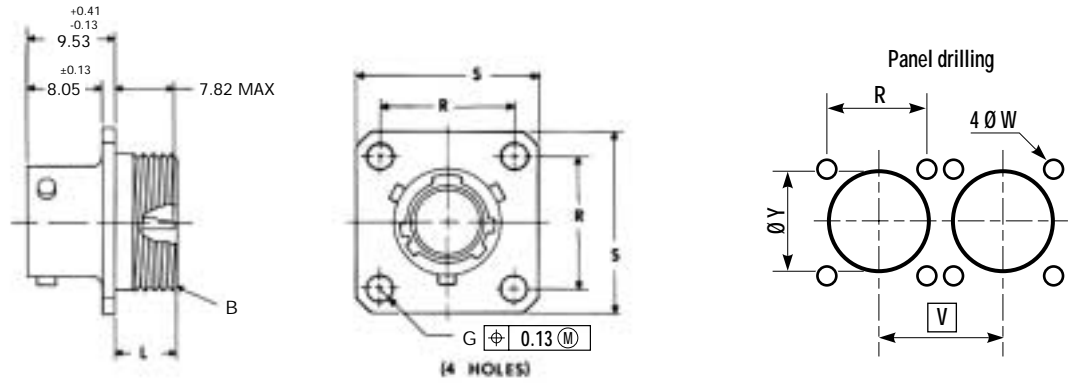
Please refer to data sheet E114 for other PCB-tail versions.



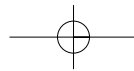
(All dimensions are in mm)

Wall mounting receptacle (front panel mounting)

JT00 Y
JMS 27475 Y



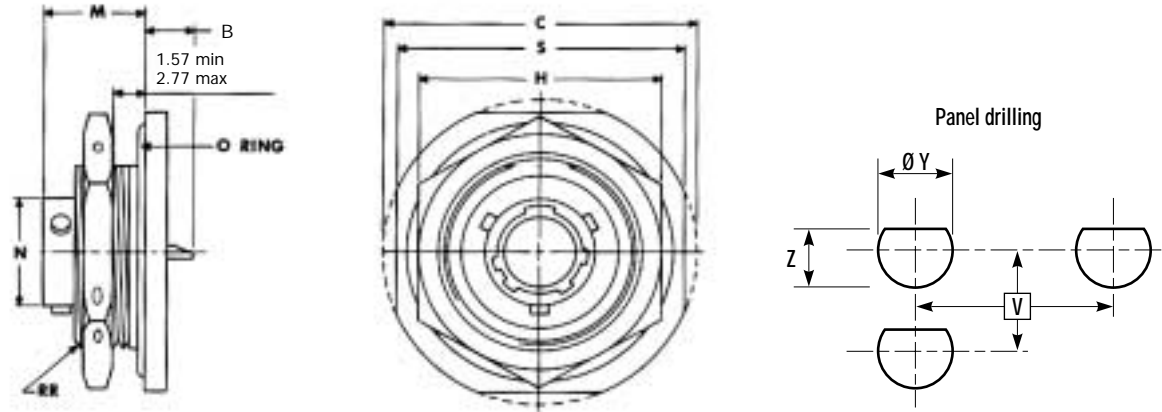
Shell Size	L Max	R	S ±0.41	G ±0.13	Y Min	V Min	W ±0.13	B Thread Class 2A
8	24.51	15.09	20.62	3.05	14.81	21.45	3.25	.5625-24UNEF
10	27.66	18.26	23.83	3.05	17.98	24.65	3.25	.6875-24UNEF
12	30.05	20.62	26.19	3.05	21.16	27.00	3.25	.8125-20UNEF
14	32.44	23.01	28.58	3.05	24.61	29.80	3.25	.9375-20UNEF
16	34.82	24.61	30.96	3.05	27.51	32.95	3.25	1.0625-18UNEF
18	37.21	26.97	33.32	3.05	30.68	36.15	3.25	1.1875-18UNEF
20	40.36	29.36	36.53	3.05	33.86	38.90	3.25	1.3125-18UNEF
22	43.56	31.75	39.67	3.05	37.03	42.10	3.25	1.4375-18UNEF
24	46.69	34.93	42.86	3.73	40.48	45.25	3.95	1.5625-18UNEF



10	14.99	21.88	17.97	16.26	23.85	3.05	17.97	24.85	3.25
12	19.05	30.05	19.84	20.62	26.19	3.05	20.34	27.00	3.25
14	22.23	32.44	23.01	23.01	28.58	3.05	23.79	29.80	3.25
16	25.40	34.82	26.19	24.61	30.96	3.05	26.71	32.95	3.25
18	28.58	37.21	29.36	26.97	33.32	3.05	29.95	36.15	3.25
20	31.75	40.36	31.75	29.36	36.53	3.05	32.23	38.90	3.25
22	34.93	43.56	34.93	31.75	39.67	3.05	35.42	42.10	3.25
24	38.10	46.69	38.10	34.93	42.86	3.73	38.86	45.25	3.95

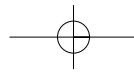
Jam nut receptacle

JT07 Y
JMS 27477 Y

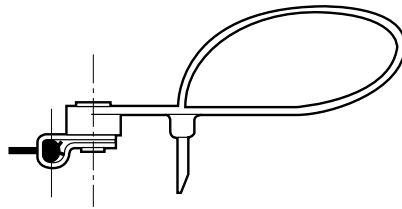


Shell Size	N Dia. +0.025 -0.13	M ±0.13	RR Thread Class 2A	B +0 -0.25	C Max	H +0.43 -0.41	S ±0.41	Y Min	Z +0 -0.25	V Min
8	12.01	11.12	.8750-20UNEF	16.31	35.31	26.97	31.75	22.46	21.08	32.90
10	14.99	11.12	1.0000-20UNEF	19.46	38.48	30.17	34.93	25.58	24.26	36.00
12	19.05	11.12	1.1250-18UNEF	22.66	41.66	33.32	38.10	28.80	27.53	39.60
14	22.23	11.12	1.2500-18UNEF	25.86	44.83	36.53	41.28	31.98	30.68	43.30
16	25.40	11.12	1.3750-18UNEF	29.01	49.61	39.67	45.24	35.15	33.86	47.00
18	28.58	11.12	1.5000-18UNEF	32.21	51.59	42.87	48.01	38.28	37.06	50.60
20	31.75	11.79	1.6250-18UNEF	35.36	54.76	46.02	51.21	41.50	40.03	54.20
22	34.93	11.79	1.7500-18UNS	38.56	57.91	50.80	54.36	44.68	43.21	59.70
24	38.10	11.79	1.8750-16UN	41.71	61.09	53.98	57.53	47.85	46.38	63.30

Shell Size	N Dia. +0.025 -0.13	L +0.28 -0.25	K Dia. +0.02 -0.13	G +0.28 -0.25	Y Min ±0.13	V Min
8	12.01	1.98	14.27	17.45	14.80	19.45
10	14.99	1.98	17.07	20.24	17.60	22.25
12	19.05	1.98	19.84	23.01	20.40	26.60
4	22.23	1.98	23.01	26.19	23.50	29.80
16	25.40	1.98	26.19	29.36	26.70	32.95
18	28.58	1.98	29.36	32.54	29.90	36.15
20	31.75	1.98	31.75	34.93	32.30	38.90
22	34.93	2.72	34.93	38.10	35.50	42.10
24	38.10	2.72	38.10	41.28	38.60	45.25



Termination of the cord for plug and line receptacle protection caps (for shell types: 06,01)



Cord length for plugs and line receptacles: 160 mm
 Cord length for square flange and jam nut receptacles: 105 mm
 Chain length for plugs and receptacles: from min. 77 to max 111mm

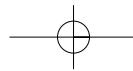
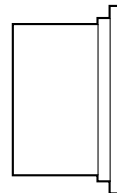
Shell size	8	10	12	14	16	18	20	22	24
A Dia Max (mm)	12.01	14.99	19.05	22.23	25.40	28.58	31.75	34.93	38.10
A Dia Max (mm)	15.98	19.08	23.47	26.65	9.75	33.10	36.43	39.60	42.85

Caps series	B	EC	N	JT	12	014
Protection cap type F: For plug EC: For square flange receptacle ER: For jam nut receptacle P: For line mounting receptacle						
Wire type N: Nylon cord (standard version) Blank: Metallic chain						
Connector series						
Corresponding connector shell size 08/10/12/14/16/18/20/22/24						
Finish 014: Olive drab cadmium plated 023: Electroless nickel plated For other finishes, please consult us						

For MS designation, please refer to page 24

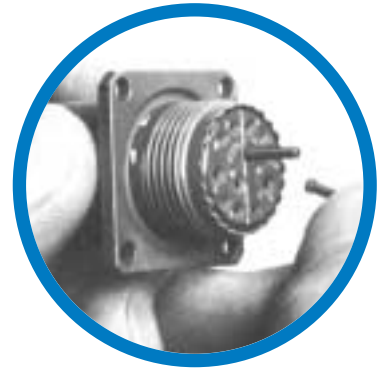
Plastic dust caps

For protection during transport and storage, plastic dust caps are available upon request.



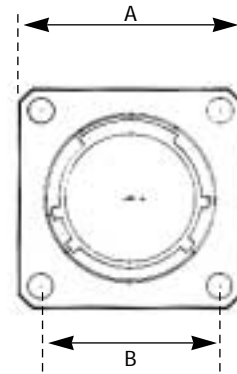
Sealing plugs

Contact Size	Proprietary No	Military No
12	900023	MS27488-12
16	900020	MS27488-16
20	900021	MS27488-20
22D	900022	MS27488-22



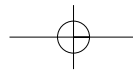
Dummy receptacles

Shell Size	A	B
8	20.63	15.09
10	23.83	18.26
12	26.19	20.63
14	28.58	23.01
16	30.96	24.61
18	33.33	26.97
20	36.53	29.36
22	39.68	31.75
24	48.88	34.93



(a): seal

Dummy receptacle	SE	00	JT	08	014
Shell type 00: derived from the JT wall mounting receptacle					
Connector series					
Shell size 08/10/12/14/16/18/20/22/24					
Finish 014: Olive drab cadmium plated 023: Electroless nickel plated					



Crimping tools



Contact size	Contact type	Contact part number		Crimping tool		Positioner	
		Proprietary No	Military No	Proprietary No	Military No	Proprietary No	Military No
12	P	900 005	M39029/58-365	809 857	M22520/1-01	809 858	M22520/1-04
	S	900 015	M39029/57-359	809 857	M22520/1-01	809 858	M22520/1-04
16	P	900 000	M39029/58-364	809 857	M22520/1-01	809 858	M22520/1-04
	S	900 010	M39029/57-358	809 857	M22520/1-01	809 858	M22520/1-04
20	P	900 001	M39029/58-363	809 857 809 801	M22520/1-01 M22520/2-01	809 858 809 826	M22520/1-04 M22520/2-10
	S	900 011	M39029/57-357	809 857 809 801	M22520/1-01 M22520/2-01	809 858 809 826	M22520/1-04 M22520/2-10
22D	P	900 004	M39029/58-360	809 801	M22520/2-01	809 810	M22520/2-09
	S	900 014	M39029/57-354	809 801	M22520/2-01	809 811	M22520/2-06

Insertion and removal tools

Plastic tools

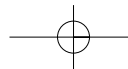


Contact Size	Insertion tools		Removal tools	
	Proprietary No	Military No	Proprietary No	Military No
12	809 859	M81969/14-04	809 859	M81969/14-04
16	809 855	M81969/14-03	809 855	M81969/14-03
20	809 854	M81969/14-10	809 854	M81969/14-10
22D	809 856	M81969/14-01	809 856	M81969/14-01

Metallic tools



Contact size	Straight type		Angle type			
	Insertion tools Proprietary No	Removal tools Proprietary No	Insertion tools		Removal tools	
			Proprietary No	Military No	Proprietary No	Military No
12	—	—	809 838	M81969/8-09	809 839	M81969/8-10
16	809 816	809 846	809 812	M81969/8-07	809 820	M81969/8-08
20	809 817	809 847	809 813	M81969/8-05	809 821	M81969/8-06
22D	809 819	809 849	809 815	M81969/8-01	809 823	M81969/8-02



Shell size
8/10/12/14/16/18/20/22/24

Insert arrangement

See on pages 5 to 7

Contact type

P: Pin (connector delivered with contacts)

A: Pin (connector delivered without contacts)

S: Socket (connector delivered with contacts)

B: Socket (connector delivered without contacts)

Polarization

Blank for normal or A, B, C, D. See coding system on page 9

Shell finish

014: Olive drab cadmium plated

023: Electroless nickel plated

For other finishes, please consult us

Deviation

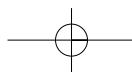
F423: PCB socket contacts

F404: Tinned PCB pin contacts

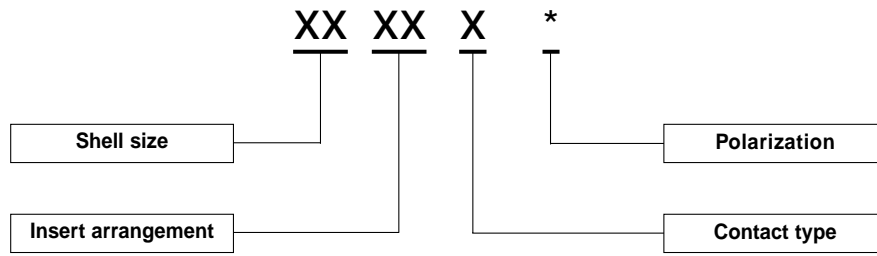
For other deviations (FXXX), please consult us

Amphenol designation – Hermetic receptacles

Series	JT	07	Y	14	35	P	–
Shell type							
00: Wall mounting receptacle							
02: Box mounting receptacle							
07: Jam nut receptacle							
I: Solder mounting receptacle							
Service class and contact style							
Y: Hermetic with interfacial seal, solder contacts							
Shell size							
8/10/12/14/16/18/20/22/24							
Insert arrangement							
See on pages 5 to 7 (arrangements marked with "Y")							
Contact type							
P: Pin only							
Polarization							
Blank for normal or A, B, C, D. See coding system on page 9							



	JT07 RE XX-XX X * 014	JMS 27474 E XX B XX X *
Hermetics	JT00 Y XX-XX P *	JMS 27475 Y XX-XX P *
	JT02 Y XX-XX P *	JMS 27476 Y XX-XX P *
	JT07 Y XX-XX P *	JMS 27477 Y XX-XX P *
	JT1 Y XX-XX P *	JMS 27478 Y XX-XX P *



Protection caps

Amphenol designation	MS designation*
BF N JT XX 014	-
BF JT XX 014	JMS 27510 B XX C
BEC N JT XX 014	JMS 27511 B XX R
BEC JT XX 014	JMS 27511 B XX C
BER N JT XX 014	JMS 27511 B XX R
BER JT XX 014	JMS 27511 B XX N
BP N JT XX 014	JMS 27511 B XX R
BP JT XX 014	JMS 27511 B XX C

XX: Shell size

* MS designations given as information only: the length of the chain or rope, as well as the attachment style could vary.

Do not hesitate to contact us for further information



Amphenol

Amphenol Socapex

Mil/Aero & Industrial Business Unit

948, Promenade de l'Arve - BP 29

F - 74311 Thyez Cedex

Tel.: +33 (0)4 50 89 28 00 - Fax: +33 (0)4 50 96 19 41

<http://www.amphenol-socapex.com>

Sales office in Paris

Tel.: +33 (0)1 49 05 30 00 - Fax: +33 (0)1 49 05 30 43